

The

NINETEEN FORTY THREE

Reveille

REVEILLE



REVEILLE KING AND QUEEN

FORT HAYS KANSAS STATE COLLEGE



THE COLLEGE INN

Service and Choice Quality Meals

and

That Snack Between Classes

THE COLLEGE SWEET SHOP

Sweet Things for the Sweet

Automatic Phonographs for Every Occasion

PHONE 90



SPORTS --- CAMPUS --- FORMALS

CAMPUS CLOTHES FOR ALL OCCASIONS

Smartest, Newest Things to Wear

GET THAT CLASSIC LOOK

THE CLASSIC-STORE
ESTABLISHED JAN. 1, 1900

Grass Brothers



Food That Pleases

Phone 4

235 West 10th

Hays, Kansas

Not SUPERMAN
But SUPER SERVICE

FELTEN TRANSFER AND TRUCK LINES

From Kansas City to Colby

HAYS, KANSAS

Phone 169

LETTERS

TO THE EDITORS

FROSH WEEK

Sirs:

The tradition at the Fort Hays State College campus is that all freshmen caught disobeying certain restrictions during Freshman Week, which precedes initiation, are given a touch of unnatural color about the face and neck through a rather "extensive" use of lipstick at the hands of upperclassmen. This is, however, only one of the informalities suffered by the "Frosh" of F.H.K.S.C. He is



required to wear a badge (several years ago it was a cap; next it was a large yellow pin; this year it was a cardboard tag; what he wears next year will probably depend upon how many scraps he has left in his ration book!) and there is usually a belt line waiting for him in the alley "back of Jones's"! Freshmen girls usually suffer no such physical injuries, but they often look a bit "washed out," especially on the "minus makeup" days.

I have enclosed a picture of one of our freshmen receiving the customary courtesies, complete with the trimmings. June Schweitzer, freshman from Osborne, Kansas, is the subject; one of the tormentors

(continued on p. 3)

LETTERS TO THE EDITORS

(continued)

is Leland Mason, the other is unidentified.

BOB TOMBAUGH
Burdett, Kansas

CAMOUFLAGE OF SABOTAGE?

Sirs:

In making our float for the annual Homecoming Day parade we followed closely the instructions in the article "Camouflage" published in your last issue. Thus we fashioned a tank, covering all both essential and non-essential parts as you instructed, with the exception of Jim Hopper, whom we found a bit difficult to keep in a dormant stage. Our pretty girl was Verna Jane Thompson, her atten-



dant Elmo Carmichael. For a foundation we used a late model 1924 Ford coupe, complete with four wheels and tires.

The student pictured standing beside the tank is Jack Grant, freshman cheerleader from Greensburg, Kansas. We wish to apologize for the seemingly bowedness of his legs—it is probably either a delusion or a photographer's error. (The photographer always catches it, doesn't he?)

SIG TAUS

Hays, Kansas

(continued on p. 4)

YESTERDAY
TODAY
TOMORROW

A Great Name

Coca Cola

COCA-COLA BOTTLING CO.

201 East 10th

Phone 301

*Without Public Opinion
Nothing Can Succeed;
With Public Opinion
Nothing Can Fail*

—Abraham Lincoln

Hays Chamber of
Commerce

LETTERS TO THE EDITORS

(continued)

DR. SCOTT RETURNS

Sirs:

Dr. Ira O. Scott joined the Army Specialist corps as a commissioned officer two days before the corps was disbanded by the Secretary of War. He retained his commission until January 15, and then returned to his teaching position at Fort Hays State. This is the reason why his picture is not with the Education faculty group.

PAUL T. SCOTT

Hays, Kansas



Sirs:

A rumor has reached my ears that you are having a beauty contest in your college in preparation for publishing the school annual. I cannot be present at this worthy occasion; however, I am sending a recent photograph of myself hoping that you will consider me a contestant for this worthy prize. My measurements are: height 5 ft. 7 in., weight 104 lbs., waist 25, bust 28, hips 36, ankle 6½, calf 8½, feet size 9½.

I have blond hair, blue eyes, and have, as you can see, a rather charming smile of which I am justly proud.

(continued on p. 5)

REVEILLE'S COVER



It's well worth turning to pages 42-43 to see another view of the Reveille King and Queen as well as pictures of the candidates for King and Queen and other pictures taken at the ball. Our King and Queen are Jack Miles, sophomore, from Marysville, and Mildred Albertson, junior from Hays. The king and queen were chosen by the students this year. Each organization submitted candidates. From this group five nominees were chosen for king and five for queen. A final election was held and the results were not announced until the crowning of the King and Queen at the Ball.

EDITOR:

Dolores Tholen

BUSINESS MANAGER:

Bill Hockett

ASSOCIATE EDITOR:

Richard Welty

ASSISTANT BUSINESS

MANAGER:
Marion Boss

CHIEF PHOTOGRAPHER:

Larry Yost

ASSISTANT PHOTOGRAPHER:

Bob Tombaugh

ORGANIZATIONS:

Annabelle Davis, Valeria Basgall, Mary Lue Hall

GREEK EDITOR:

Muriel Cookson

COPY WRITERS:

Marie Howk, Betty Radcliffe, Tom Hunsicker

FACULTY ADVISORS:

Paul T. Scott, Walter Wallerstedt

ENGRAVERS:

Mid-Continent Engraving Company

PRINTERS:

McCormick-Armstrong Company, Wichita

PORTRAIT PHOTOGRAPHER:

Ekey Studio

All Diamonds
Were Not
Created Equal



LOOK INTO
THE
DIAMOND

DIAMONDS . . . the ultimate in gifts, man's greatest gift of love . . . a girl's most cherished and enduring possession . . .

Make your selection the modern way from our collection of scientifically graded diamonds.

Beautiful diamonds, expertly graded by a registered jeweler. Now you are assured of glorious beauty, authentic value and a diamond of tested quality.



THOLEN
JEWELRY

804 Main St.

Registered Jeweler
American Gem Society



Always a Good Show

FOX STRAND THEATRE

B. F. ADCOCK, *Manager*

Comfortable Seats

Air-Conditioned

LETTERS TO THE EDITORS

(continued)

Thank you for your kind attention.

INEEDA ROOST
Swayback, Kansas

Ed.'s note:

● Due to lack of space, Miss Roost's picture was not printed. However, we wish to enlighten her of the fact that there is no beauty contest—two students are merely picked as achievement king and queen through their more or less extended contacts throughout the campus. We're sorry, Miss Roost.—ED.

Dear Sirs:

In your last issue you printed a picture of my wife, my sister, and

(continued on p. 6)



REVEILLE REPORTS

From—THE PRESIDENT
THE DEANS
THE EDITORS

In the days of Custer and Sheridan, a uniform-clad figure was not an uncommon sight on the streets of Hays. Hays was a beehive of activity, and the men stationed at Fort Hays helped to make it buzz. . . . A few years ago, an army or navy uniform on the campus would have caused a great deal of excitement. To have a boy friend in the army or navy meant prestige in the eyes of others. Today, we have, in a sense, gone back to the days of Custer and Sheridan. A uniform is a common sight. When school opened last fall, the remnants of the glider school soared away. The glider school had been stationed in Hays all summer. It was not very long before the Civilian Pilots began to fly in. The college had contracted to train 440 pilots as a liaison group. Dr. George A. Kelly of the psychology department devoted his time to the Civilian Pilot Training program. When enlistment in the C.P.T. program was abolished by governmental order, the program was changed to the War Training Service, conducted along lines similar to the C.P.T. The green uniforms of the W.T.S. became familiar to the people of Hays as well as to the students. The men in this group compensated for the students who were being inducted into other branches of the armed service . . . in a way.

The Women's Leadership Organization sponsored Saturday night open houses in the Coliseum for the entertainment of the students and W.T.S. pilots. . . . At the end of February, the Flying Training Command personnel assigned to head the newly instituted college training program for aviation cadets arrived on the campus. Fort Hays was one of the many colleges throughout the country chosen to train men of the Army Air Force. The training schedule includes four major groupings—academic, military, physical and flying. The students are enrolled as privates, and remain privates until the completion of the course. They are then sent to one of the Flying Training Command Classification Centers as cadets and assigned to training as pilots, bombardiers or navigators. The purpose of the five month program is to prepare the men for cadet training in the AAF Flying Training Command. When the army first arrived, the discipline was strange to most of the students and faculty members. It was not uncommon to see the students stand around in groups and watch the men march by, singing the Army Air Corps song. Before long, the "hut, two, three, four" became as familiar to the students as it was to the army men themselves. The glider pilots, the liaison pilots, and the army air force men have all been housed at Lewis Field and fed at Cody Commons. Lewis Field has been a home for many boys who attended Fort Hays, and now it is fitting that it should be used in the service of our country.

LETTERS TO THE EDITORS

(continued)

myself, supposedly. The correction which I would like for you to make is that the second woman in the picture is not my sister, as is stated, but is a total stranger to both my wife and myself.

However, it seems to me that I have seen this woman; perhaps she's a flower vender in the city. For curiosity's sake I'd like to know.

CAPTAIN FOREANAFT

Podunk Center

Editor's note:

● Our apologies to Captain Foreanaft, however, he will be happy to learn that the unidentified woman has been identified. She is the mother of Mrs. Etta Lott, and her name is Mrs. Ima Weary. She hails from Hays, Kansas, the metropolis of the west.—ED.

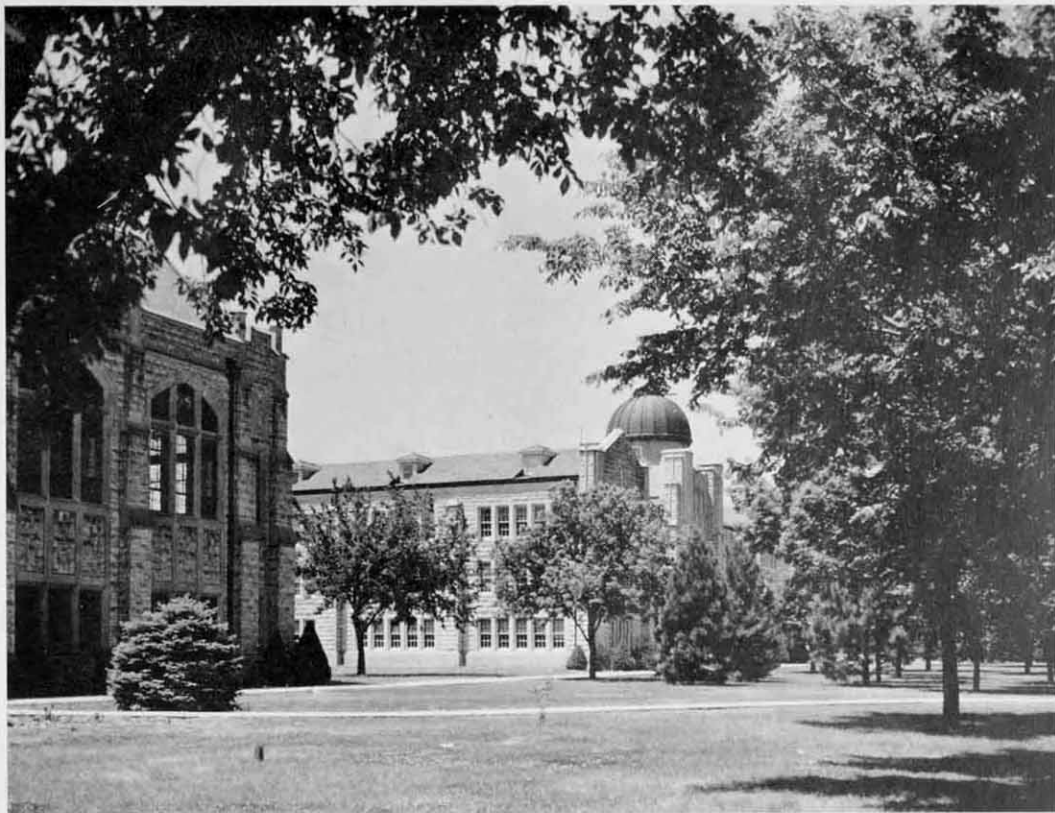
Dear Sirs:

I noticed in your last issue of the "Reveille" several important persons were entirely omitted from your issue, to say nothing of many errors found in names. Of course, I'm no editor, but it appears to me that such mistakes are inexcusable. It seems that with all the checking and rechecking supposedly required for such a major issue as yours it should eliminate such embarrassing situations.

Can you tell me why, then, every year finds new names and faces slighted.

STUDENT BODY

(continued on p. 7)



LETTERS TO THE EDITORS

(continued)

Editor's note:

● Our apologies to all whose names or faces have been misrepresented or omitted at any place in this magazine. However, in criticizing us, we hope others keep in mind that only through a co-operation of 110% can a perfect magazine be secured; furthermore, the arising shortage of workers affects the magazine industry the same as any other industry.—ED.





A BIT OF PRE-ELECTION PHILOSOPHYING BY TOM WEBSTER

TIGER POLITICS

Corny Issues Highlight
Fall Election Campaigns

"One free day for every day of class." "Refreshments during the 10:30 and 3:30 classes every day." "No tests." "An informal varsity every night of the week except Saturday, when there will be a formal one." "Assemblies each week featuring Broadway chorus girls." "Shorter classes and higher grades," and thus went the fall election promises. Little did the unsuspecting Frosh think that perhaps some of these promises would never be kept. They had always been told that college was great stuff and that anyone who would let his studies interfere with his college education was just a bookworm who would regret it all later.

Published at Fort Hays Kansas State College
under the supervision of the Reveille Committee.

CONTENTS

THE YEAR'S EVENTS

First Varsity of School Year	20
Homecoming	30
Orchestra Concert	44

CLOSE-UP

Tom Webster, by Larry Yost	8
----------------------------------	---

SPORTS

Football	27
Girls' Sports	48
Basketball	60
Spring Sports	76



REVEILLE'S PICTURES

Larry Yost, freshman from La Crosse, and Bob Tombaugh, sophomore from Burdett, were responsible for photographing the events of the year for this issue of the Reveille. Larry is now in the Army Air Corps doing photographic work. Our loss is the Army's gain. Bob is in the Naval Reserve.

THEATRE

The plays of the Year	78
-----------------------------	----

PRESS

The College Print Shop	35
------------------------------	----

AVIATION

War Training Service	47
----------------------------	----

OTHER DEPARTMENTS

Letters to the Editors	2
Life Goes to the Reveille Ball	42
Reveille Reports	6
Pictures to the Editors	89





WHERE ARE THE WOMEN?



I DIDN'T WANT TO STUDY ANYWAY!



TAKING CARE OF JUNIOR!

LIFE RETURNS TO THE CAMPUS

Picnics, parties, studying, or just plain loafing, summed up in a few words, "Life Returns to the Campus." At the opening of school this year fewer students were back, but that didn't affect the enthusiasm of those who came back to the campus the first week in September. Freshman week began on September 4, and with it began a buzz of activity that continued on till the end of May. Activities were planned for the first week to keep the "freshies" from getting too homesick for mother's cooking and

father's automobile. The annual all-school picnic was held at the state park for the students and members of the faculty. This annual picnic does more toward getting the students acquainted with each other and with the faculty than any other social event of the year. After freshman week the sororities and fraternities took over and did their part to make new students feel at home. Teas and smokers, picnics, hayrack rides, and parties left little time for studying the first few weeks of school. No one wanted

SOUP'S ON!



I THINK YOU'RE KIDDING!



COME AND GET IT!





I KNEW YOU COULD, MAYFLOWER!



I WANT TO BE COAXED!



THE WHISTLE JUST BLEW!

to study anyway with the weather as beautiful as it was. Some students tried to study while sitting on the edge of the lily pool. There were just too many distractions, though. Rich Roemer returned to school with the "Mayflower." Everyone knew the Mayflower, and the Phi Sigs were thankful for it more than once. The first games of the year were preceded with pep rallies. A snake dance through Main Street meant

more than one sore knee or weak ankle, but it was worth it. One thing we didn't see much of this year was the traditional "meat line." Either the freshmen were more conscientious about wearing the "prescribed insignia" or the upperclassmen are reforming. Maybe the freshmen were just too slick about pulling out the green cardboard tag in time to avoid being caught without it. The freshman girls got their share of lip-

stick, though. The sophomore boys just couldn't keep their eyes off the freshman girls, and consequently the lipstick for those caught disobeying the regulations of the Student Council. It was fun though and these same Frosh will be having the same fun at the expense of others when school reopens next fall. All in all it was great fun and the Frosh soon learned how to combine study and pleasure. The rest of the story will be told in the latter part of this book.

TOO NICE TO BE INSIDE!

ALL THROUGH FOR THE DAY!

YEAH, TIGERS, FIGHT!





MARY

MARTHA

PRESIDENT WOOSTER

MRS. WOOSTER

CYNTHIA

THE PRESIDENT AND HIS FAMILY

It is the hope of the students at Fort Hays that Dr. Lyman Dwight Wooster, president of the college for the past two years, has enjoyed his association with them as much as they have enjoyed their association with him. President Wooster is pictured here with Mrs. Wooster, and three of their children. Sergeant Lyman Wooster, who is serving with the Army in Africa, was unable to be with the family when the picture was taken. His photograph is on the bookshelf. Mary and Martha will receive their degrees from Fort Hays this spring. Cynthia is a senior at Hays High School.

ADMINISTRATION



E. R. MCCARTNEY



ELIZABETH J. AGNEW

E. R. McCartney became dean of Fort Hays State in 1941 when the presidency of the college was conferred upon L. D. Wooster, the former dean.

In 1932 Dr. McCartney was appointed head of the department of economics and business administration at Fort Hays State. He had recently received his Ph.D. degree from the University of Nebraska where he also was employed as instructor in economics. He is a member of Pi Gamma Mu, Delta Sigma Pi, the Fort Hays Kansas State College Honor Society, the American Economic Association, the American Academy of Political Science, and the Council of Geographers.

Miss Elizabeth J. Agnew assumed her present position as Dean of Women at Fort Hays in 1919. In addition to her duties as dean, Miss Agnew was appointed supervisor of Cody Commons in 1920. Previous to her appointment as dean, Miss Agnew had been head of the department of home economics at Fort Hays. She is a member of Phi Kappa Phi, Pi Gamma Mu, A. A. U. W., and Delta Kappa Gamma.

W. D. MORELAND



In 1933 Dr. W. D. Moreland accepted a position as head of the political science and sociology department at Fort Hays State. In addition to this position, Dr. Moreland is Adviser to Men and is in charge of Lewis Field dormitories. Dr. Moreland is a member of Pi Gamma Mu. He received the Carnegie Scholarship to study international law at McGill University, and was selected for research work to assist the Wickersham.

Miss Gorham, Adviser to Women and assistant professor of psychology, came to Fort Hays in 1928. Before accepting a position at the college, Miss Gorham was superintendent of the Holcomb Consolidated School. She is a member of the A. A. U. W., Delta Kappa Gamma, Delta Epsilon, Pi Gamma Mu, the Kansas Academy of Science, and the World Federation of Education Associations.



MAUDE I. GORHAM

Irvine F. Wilson became bursar of the college in 1935 after receiving his degree from the college. Mr. Wilson is a member of the Executive Committee of Central Association of University and College Business Officers, and is listed in Who's Who in American Education.

When Mr. Dalton came to Fort Hays in 1935 he was an instructor in the zoology department. In 1938 he became registrar. Previous to accepting the position at the college, Mr. Dalton was principal of the Colby Community High School. He is a member of Sigma Xi.

IRVINE F. WILSON



STANDLEE V. DALTON





“ANDY” SCHOEPEL

Fort Hays takes its hat off to Andy Schoepfel the new governor of Kansas, one time football coach of the Fort Hays Tigers. Andy came to Fort Hays in 1928 as assistant football coach, and served as head coach in 1929. His career as an all-Missouri Valley end helped him teach the Tigers plays that were admired by both spectators and opponents. Andy's coaching job now is bigger than ever, but Fort Hays places its confidence in him just as it did in 1928.

★ ★ ★ ★

MEET THE FACULTY

Not only was the student body decreased by the call of the armed forces, but the ranks of the faculty were also touched. Miss Geneva Millett, former associate professor in women's physical education, was inducted in the WAVES and received her ensign's rating. Dr. Coder of the English department

is now a lieutenant in the army, and Howard Halgedahl, band director, is now a member of the Army Air Corps band at Washington, D. C.

Yes, even the faculty have served their time as buck privates but are fast advancing, hoping that they won't find a former student outranking them.

FACULTY

ORVIS GROUT, Assistant Professor of Speech . . .
MODESTO JACOBINI, Professor of Languages and Head of Department . . .
C. H. BROOKS, Assistant Professor of Language; Extension . . .
MRS. EMMA GOLDEN, Assistant Professor of Language . . .
HUGH BURNETT, Assistant Professor of Political Science; Director of Extension Service . . .
JAMES START, Professor of Speech and Head of Department.



LESTER SCHMUTZ, Assistant Professor of Agriculture and Head of Department . . .
JAMES ROUSE, Professor of Agriculture and Head of Department . . .
MARION PEARCE, Supervisor of College Farm and Dairy.



HOBERT DAVIS, Assistant Professor of Music . . .
WILLIAM HUGH MILLER, Professor of Music and Head of Department . . .
LUCILLE FELTEN, Assistant Professor of Music . . .
HOYLE CARPENTER, Assistant Professor of Music . . .
CARL MALMBERG, Assistant Professor of Music.



FACULTY



LEO C. THOMAS, Instructor in Business Administration . . . THELMA I. DeFOREST, Assistant Professor of Business Administration . . . VERNON T. CLOVER, Assistant Professor of Economics . . . LEONARD W. THOMPSON, Professor of Economics and Business Administration and Head of Department.



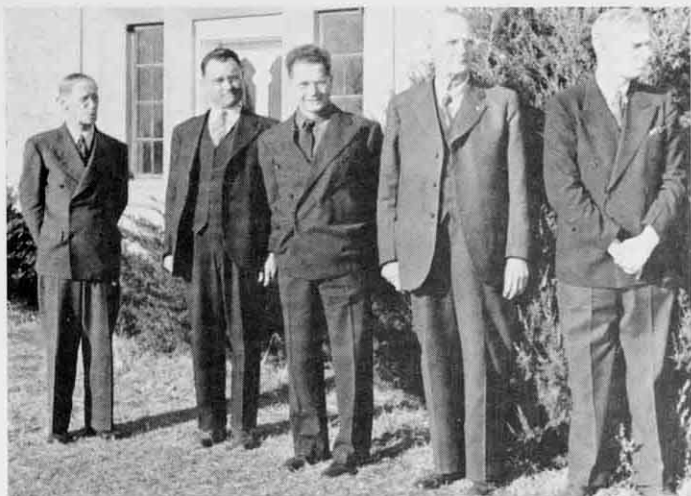
EDWARD COLYER, Professor of Mathematics . . . GENEVA RIFE, Instructor in Mathematics . . . EARL G. SWAFFORD, Instructor in Mathematics . . . CLYDE T. McCORMICK, Professor of Mathematics and Head of Department.



RALPH HUFFMAN, Instructor in Physical Education . . . WILLIAM L. BEARLEY, Associate Professor of Physical Education . . . PAUL B. GROSS, Director of Athletics.

FACULTY

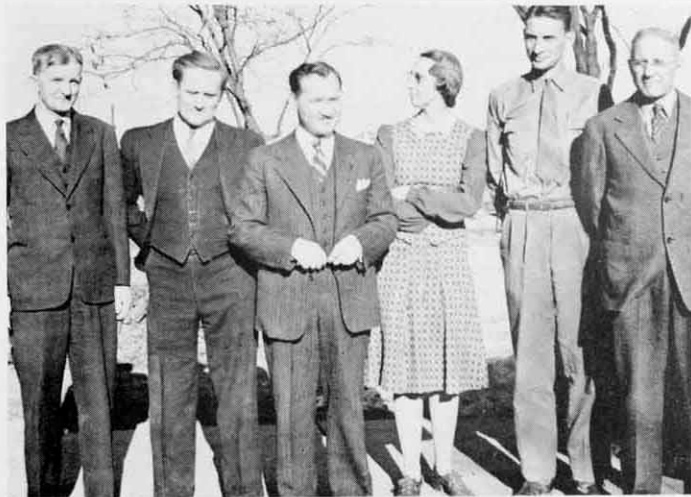
CHARLES WIEST, Professor of Philosophy and Head of Department . . . **CECIL E. MARSHALL**, Instructor in History . . . **ARTHUR KATONA**, Assistant Professor of Sociology . . . **ROBERT L. PARKER**, Professor of History . . . **RAYMOND L. WELTY**, Professor of History and Head of Department.



GLADYS PATTON, Assistant Professor of Home Economics . . . **MARGARET H. HAGGART**, Professor of Home Economics and Head of Department . . . **ROBERT E. BUGBEE**, Assistant Professor of Zoology . . . **DONALD M. JOHNSON**, Assistant Professor of Psychology . . . **FRED W. ALBERTSON**, Professor of Botany and Head of Department . . . **GEORGE ROBERTSON**, Professor of Zoology and Head of Department.



WALTER WALLERSTEDT, Instructor in Printing . . . **JOHN M. STRANGE**, Assistant Professor of Art . . . **DREW DOBOSH**, Assistant Professor of Art . . . **MABEL VANDIVER**, Professor of Art and Head of Department . . . **R. U. BROOKS**, Assistant Professor of Industrial Arts . . . **EDWIN DAVIS**, Professor of Industrial Arts and Head of Department.



FACULTY



T. W. WELLS, Assistant Professor of English . . . FERN BROCK, Instructor in English . . . CLARICE E. SHORT, Instructor in English . . . MYRNA CARVER, Instructor in English . . . MYRTA E. MCGINNIS, Professor of English and Head of Department . . . PAUL T. SCOTT, Instructor in English and Journalism . . . MRS. RALPH CODER, Assistant Professor of English.



DOROTHY SPENCER, Assistant Librarian . . . HELEN FISHER, Assistant Librarian . . . FLOYD B. STREETER, Professor of Library Science; Librarian . . . MARGARET MCGIMSEY, Assistant Librarian . . . ELEANOR MURRAY, Assistant Librarian . . . MARGARET VAN ACKEREN, Assistant Librarian.



HARVEY ZINZER, Professor of Physics and Astronomy and Head of Department . . . ROY RANKIN, Professor of Chemistry and Head of Department . . . ANDREW RIEGEL, Instructor in Botany . . . JAMES CHAPPELL, Associate Professor of Chemistry . . . VERN LIPPERT, Instructor in Physics . . . ARTHUR BARTON, Professor of Biology and Head of Department.

FACULTY

MRS. BERT BERGLAND, Instructor in Physical Education . . . JESSE PEARCE, Assistant Professor of Health . . . GRACE CARD, Instructor in Health, College Nurse . . . ELIZABETH BARBOUR, Assistant Professor of Physical Education.



GAYNELLE DAVIS, Assistant Professor of Education and Supervisor of Teacher Training . . . MAUDE McMINDES, Associate Professor of Education and Director of Teacher Training . . . ROSELLA McCARROLL, Assistant Professor of Education . . . ROBERT McGRATH, Professor of Education and Head of Department . . . MARY MAE PAUL, Assistant Professor of Education and Supervisor of Teacher Training . . . PEARL CRUISE, Assistant Professor of Education.





FORT HAYS FRESHMEN AND UPPERCLASSMEN SWING OUT AT THE FIRST ALL-SCHOOL VARSITY OF THE SCHOOL YEAR.

THE FRESHMEN

Each new school year brings to the campus a new group of Freshmen. This year the freshmen were typical freshmen just as they always are. Some of them were homesick the first few weeks of school, others were not. Some were timid, others were quite confident. Some were away from home for the first time in their life, others had been away before. In spite of these differences among individuals, they all had one thing in common. They were enrolling in college for the first time in their lives, and they were all freshmen. During freshmen week, the students were assigned to advisory groups and schedules were made out for the first semester. These



FRESHMEN CLASS OFFICERS FOR THIS YEAR WERE: PRESIDENT, DALE PORTSCHY; VICE-PRESIDENT, DANIEL ROBERTS; SECRETARY-TREASURER, TOM HUNSICKER.

FRESHMAN DAZE

advisory groups helped the students become acquainted with college life on a small schedule. They also helped to foster friendship among the individuals in the groups. . . On September 25, the first election of the school year was held. Candidates for freshmen class officers were: Dale Portschy, Frances Owens, and Dale Durfee, president; Dan Roberts, Jack Campbell, and Elinor Brining, vice-president; James Clark, Tom Hunsicker, secretary-treasurer. Valorie Lamoree, Bill Dodson, Barbara Bowman, Peggy Nickols, and David Smith were nominees for the two student councilmen. The results of the election were: Dale Portschy, president; Dan Roberts, vice-president; Tom Hunsicker, secretary-treasurer. Valarie Lamoree and David Smith were chosen for the two student councilmen. . . Freshmen girls were entertained by a tea given by the Faculty Women, and by teas given during rush week by the Pan-Hellenic Council and the social sororities on the campus. The boys were entertained by the fraternities. . . A large green cardboard tag with the words, "Fort Hays Freshman" was the prescribed insignia that all freshmen had to wear from the opening of school until Thanksgiving vacation. All freshmen caught without the card were duly raked over the coals by sophomores or upperclassmen. The letters F.H.K.S.C. were "Tattooed" on the faces of freshmen girls with red lipstick that was almost impossible to remove in the ten minutes between classes. The meat line awaited the freshmen boys who chose to stray from the beaten path. . . Homecoming activities were again largely the job of the freshmen. The campus was decorated by the sweat of their brows, and the crowning ceremonies on the football field were planned and carried out by a committee of freshmen. . . Before each game it was familiar to hear the freshmen boys "spout off." For those who don't know, spouting off is a vocal exercise performed with the full capacity of the vocal chords. The freshmen were good sports about spouting off, wearing the green "Dog" tags, decorating the campus for homecoming, and we know they wouldn't have missed it for anything in the world.





MARILYN ABERCROMBIE
KENNETH ALMQUIST
LOA RUTH ANDERSON
ELIZABETH BAILEY
ELLEN BAIRD
JEROME BALTHAZOR



JESSE LEE BARNES
RODNEY BEAMGARD
KEITH BEARDMORE
MYRTLE BEAVER-WINTER
RALPH BELL
WILLIAM BENNETT



BRUCE BENSON
LLOYD BERGER
ROBERT BLACKBURN
LEONARD BOEHM
AVALON BONEBRAKE
BARBARA BOWMAN



ELINOR BRINING
ATHA FAYE BROADBOOKS
LOUISE BROOKS
PEARL BROTEMARKLE
LILA BROWN
HENRIETTA BRULL



MARCELLA BRUNGARDT
ROMA BRUNKAU
DOUGLAS BURBACH
MARY BETH BURNS
DOROTHY JEAN BUTTON
KEITH CALDWELL



JACK CAMPBELL
NEAL CHESNEY
STANLEY CHITTENDEN
JERALD CHRISMAN
LOLA CLAR
JIM CLARK



LOIS CLINE
WILMA CLOUGH
WILMA CLOW
LORREN COLE
GENE COMPTON
VERNA COOKE



WILMA COVALT
HUGH COWAN
VIRGINIA CRAFT
VIOLA CROMWELL
WILLIAM CROMWELL
ROSANNA DAUBER

WAYNE DECKERT
OLINDA DEINES
GRETTA DENGERRINK
EDNA DIBBLE
RUTH DIETZ
BILL DODSON



ELVA DRALLE
JOSEPH DUELL
PAUL DUELL
DALE DURFEE
MARVIN DURRANT
NANCY EASTER



MELVIN EICHMAN
MERVIN ELMORE
GLENN FEIL
BETTY FERTIG
WILBUR FISCHER
RICHARD FISCHLI



LLOYD FRACK
DOROTHY FRYE
RUTH FLETCHER
LOWELL FLORA
LA VONGE FOLEY
DOROTHY FORD



VELMA GARRETT
JAMES GAVIN
JAMES GILGER
RUTH GILGER
FREDERICK GLEISSNER
LEONA GLODFELTY



GEORGE GOLLER
DALE GRABNER
RUBEN GRAF
JACK GRANT
NOVA GRECIAN
ELAINE GRAFEL



BETTY HALL
GENE HALL
JOE HAMM
CLARICE HAMMOND
ERNEST HANZLICEK
HARRY HARBAUGH



ETHEL HARRIS
MILDA HARRIS
BILL HARVEY
ESTELLA HAYES
KATHERINE HEALZER
BILL HELM





JOHN HENDERSON
DARRELL HILLAN
DONNA HINMAN
GERALD HINMAN
BETTY HOCKBROTT
WILBUR HODSON



KEITH HOMLER
GLENN HORNER
LORENE HORNER
EVA MAE HUDDLESTON
ESTHER HUEFFLE
LAWRENCE HULL



TOM HUNSICKER
DARYL IKENBERRY
MARVIN INLOES
JUANITA JUBY
LEONA JACOBS
RUTH JACOBS



AL JETT
ELDA JOHNSON
MILFORD JOHNSTON
JOHNETTA KAISER
KENNETH KAUFFMAN
VIOLET KELLER



MARJORIE KENYON
WILBUR KLEMM
DOROTHY KOESTER
WARREN KOPKE
LAUREN KRUSE
PAUL KRAUSE



STANDLEY KRAUSE
GRACE KUMBERG
RUTH LAIZURE
ANITA MAE LANDRUM
VALARIE LAMOREE
CHARLES LAMOREUX



KATHERYN LAW
PAT LAWLESS
WAYNE LEUSZLER
DORIS LESLIE
IMELDA LITTLE
LELAND LITZENBERGER



ANNA LOCKER
FRANCIS LOCKER
DICK LOHNS
WILBUR LOHREY
ANITA LOMAX
MABLE LOVE

EUGENE LUCE
 NAOMI MAGLEY
 DARRELL MANNING
 BASIL MARHOFFER
 MAX MARSHALL
 ALBERTA MATHENEY



KENTON MAUCK
 EDGAR McCAULEY
 JACK McCULLOUGH
 MARJORIE McGRATH
 JEANNE McKEAN
 VERONA McKINLEY



MARVIN McREYNOLDS
 ALICE MAHREE MEADE
 MARCINE MELLICK
 EILEEN MEYERS
 DON MILLER
 BERNICE MOCK



MIIJA MODEN
 BECKY MOREHEAD
 IRENE MORELL
 LOWELL MORRIS
 JOE MUMM
 WARREN NEBEL



MAXINE NELSON
 DUANE NICHOL
 PEGGY NICHOLS
 LORETTA NOVAK
 LAWRENCE OELKERS
 MARGARET OLDHAM



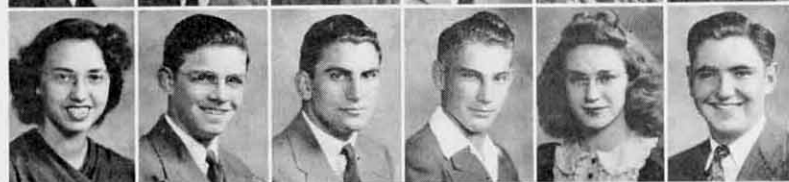
CLARA OLIVA
 MILDRED OLSON
 MARIE ORTEN
 CREIGHTON OSBORNE
 CATHERINE OSTERFUND
 FRANCIS OWENS



LEONARD PFEIFER
 PAUL PEIFER
 PAUL PLUMB
 DALE PORTSCHY
 ERMA PRIOR
 LENA PUGH



DORIS RAHJES
 WILLIAM RAY
 ERNEST REISSIG
 ALBERT RIEDEL
 THELMA RIGGS
 DANIEL ROBERTS





EARL ROLLINS
MAXA RORABAUGH
BETTY JO SALMON
EDWIN SATTERLEE
EUGENE SCHMIDT
JUNE SCHWEITZER



BUD SEAMAN
HELEN SHAW
RAYMOND SHAW
LEAH SHIPLEY
MERRITT SHIVELY
ANNELLA SKEEN



MYRL SLIMMER
DAVID SMITH
FRANK SMITH
LUCILLE SMITH
RALPH SPOMER
PAT SPRINGER



CRETA SPROUL
ESTHER STOLTZ
ELEANOR STEWARD
MILDRED STRECK
THELMA SUNLEY
BESSIE SWICK



ESTHER TATUM
DOROTHY TEPPE
LOIS TIMKEN
DEAN TOWNSEND
ETTA VARNEY
EDITH VERMILLION



ELSIE VONFELDT
WINIFREDA VONFELDT
MAXINE WAGNER
ROBERT WAGNER
ELYNOR WALKER
FREDA MAE WARNER



JEAN WEIRAUCH
VERGIL WENGER
EDWIN WERTH
JAMES WESLEY
CORINNE WHITHAM
ANNE WIESNER



ROSALIE WILDS
OPAL WILLIAMS
VIOLA WILSON
MYRON WORDEN
MILES WYCOFF
SYLVIA MATHER-WYLLI



CAROL WYMAN
YVONNE WYMAN
NAOMI YEAGY
LARRY YOST



IF YOU'LL GET IN NOW, COACH BEARLEY, WE'RE READY TO GO

TIGER TOURS

Only eight lettermen answered Coach Bill Bearley's call last fall, and among these were not the two captains elected the previous year, Otis Skubal and John Bergman. Graduation, defense industries, and the armed services depleted the 1942 Tiger team. Three of the lettermen were seniors—Bill Read, Harold Miller and George Helm, who served as acting captains and carried most of the responsibility for the team's actions on the field. They were elected honorary captains at the close of the season by the football squad. Ray Huffman and Keith O'Connor were elected co-captains for next year, but since that date both have been called into active service by the Army Enlisted Reserve Corps.

Two new coaches were named to struggle with the not-so-bright football situation—Bill Bearley and Ralph "Red" Huffman. Bearley was no stranger to Fort Hays as he was advanced from assistant football coach and head track coach to head coach in both sports, to fill the vacancy left when Paul Waldorf obtained leave of absence to study at Northwestern for his doctor's degree.

Bill entered Fort Hays in 1930 and for the next four years was the blocking back of the football team, and for this work received four letters; he was elected captain of the team during his senior year. In 1934 he graduated with a B.S. in Education and a major in Health and now has his Master's degree from Missouri University in Physical Education. Having coached a year and a half at Liberal, Kansas, he was then elected back to Fort Hays as assistant to Jim Yeager in 1935. During the seasons of 1936-41 he was assistant to Paul Waldorf.

Ralph Huffman, new line coach, while attending Fort Hays State in 1936 was named all-conference and all-state center, the highest honor that can be received in the state in the field of football. Red graduated in 1937 with a B.S. in Education and a major in Industrial Arts. He coached in the Atwood high school during the years 1937-38 and then moved to the Dodge City Junior College, where he coached during the years 1939-41. He completed the work on his Master's degree from the Uni-



SEASON'S SUMMARY

Opponent	Hays	Opp.
Colorado College	0	13
Southwestern	0	13
Bethel	20	66
St. Benedicts	0	33
Emporia State	0	40
Washburn	13	21
Regis College	13	6
Pittsburg	6	13
Wesleyan	0	9





versity of Missouri in 1942 and was elected to coach at his Alma Mater the same year.

In the first game of the season the Tigers were beaten by a championship Colorado College team at Colorado Springs 13 to 0. The game was much closer than the score indicated, and any break would have given the Bengals a scoring opportunity. The game was the first between the two schools on the gridiron with John Lane, halfback, Norman Johnson and LeRay Scinemetz, guards, and Bill Read, end, starring for Fort Hays.

The Tigers suffered their first conference defeat of the season the next week-end when the Southwestern Moundbuilders handed them their second straight 13 to 0 set-back. A blocked punt and an intercepted lateral set up two third quarter touchdowns for the Builders. Most of the game was played in the center of the field, and neither team showed any great offensive strength. Fort Hays was out-weighted considerably, and Southwestern gained consistently through the line. Paul Andree, center, and Richard Roemer, tackle, played good ball for the Bengals in this tilt.

A strong Bethel team gave the Tigers a sound trouncing the next week-end, defeating them 20 to 66. For the first time the Bengals showed a strong offense, but defensive blunders gave Bethel the breaks they needed, and they were able to hold the Tigers in check while scoring three touchdowns themselves. The Bethel scores were gifts from Fort Hays, coming as the result of two blocked punts, a deflected pass, and a "bootleg" reverse. Jack Wolfe, halfback, plunged over for the Hays touchdown, the first of the season.

The Ravens from St. Benedict's downed the Tigers 33 to 0 at Atchison for their second conference loss of the season. Irv Comp, back, and Larry Visnic, guard, were the big guns for the Ravens. The game was not as one-sided as the score indicates, because the Atchison team made most of their counters on long runs or passes. Fort Hays showed flashes of power, but said flashes were short-lived. The brightest spot in the rather dreary setup was the improved kicking of Ray Huffman and Keith O'Connor.

BILL READ, ROSCOE RORABAUGH, HAROLD MILLER, ERNEST REISSIG, HOWARD GANT, JOHN LANE, DAVID SMITH, OMER KUHN, RICHARD WELTY, GEORGE HELM, KEITH O'CONNOR

Their punting, which averaged 42 yards, was the only factor that kept the superior weight and experience of the Ravens from completely running wild.

Emporia State came to Hays the next week-end for the Homecoming festivities and succeeded in spoiling the celebration by walking over the Tigers 40 to 0 on the Lewis Field turf. Bernard Taylor, Emporia tailback, starred for the visitors, scoring the first of three touchdowns just four plays after Ray Huffman had fumbled the opening kick-off. The fast and smooth Hornets didn't give Fort Hays a real chance, completely smothering the Gold and Black offense. This marked the third C.I.C. loss of the season for the Tigers without a point having crossed an opponent's goal line.

For their next game, the Bengals packed their luggage into the bus and journeyed to Topeka for a game with Washburn. Again the Hays team lost, but this time they came close, very close, losing 21 to 13. Ed Bolduc, nationally known Washburn center, blocked a Hays second half punt, recovered it, and carried it over for the touchdown that broke the Tigers' back. John Lane was the big gun for Fort Hays in this game. He scored one of the Bengals touchdowns after a long punt return in which he exhibited the best broken field running of the night. The loss to Washburn just about cinched the cellar spot for the Tigers.

Ray Huffman and Paul Andree finally managed to start the Tigers to rolling as they led the Gold and Black to a victory the next week-end over the championship Regis College crew at Denver. The locals used strong line plays to defeat the Coloradians 13 to 6. Andre was the main cog in the Bengals pass defense, a defense that completely stopped the best passing attack in Colorado. Huffman was the big gun on offense, as he pounded the line all afternoon with amazing success. The Hays team threw only one pass all afternoon, so thorough was their ground attack. This was another Homecoming game, the third of the season for Fort Hays.

The Tigers came home and went to Pittsburg and played another 13 to 6 game, but this time they were on the wrong end, Pittsburg being on the right end. The first half was all Pittsburg, but in the second period the Bengals really came back. Besides pushing the Gorillas all over the field, they scored their first touchdown of the



LE RAY STEINMETZ, PAUL ANDRE, RAY HUFFMAN, RICHARD ROEMER, ALLEN CAFFERTY.
HARRY HARBAUGH, BILL WHITAKER, AL RIEDEL
JACK WOLFE NOT PICTURED

conference campaign. Although they lost again, the team was particularly proud of their feats in this game. Pitt was rated to completely smash the Hays team, but the reverse was true. Only the Gods of Good Fortune and Lucky Football Teams saved the Gorillas that day, so badly did the Tigers maul them in that last half.

The last game of the season was a cold

and dreary affair. With a snow on the field and only a handful of spectators in the stands, the Tigers lost a long, cold battle to Kansas Wesleyan 9 to 0. A strong Salina defense and a tricky offense set the Bengals back on their heels the entire contest. Vanpel't and Keeler sparked the Wesleyan team to the victory with fine performances, despite the cold.



BILL LUDES, KING

CAROL GRIFFITH, QUEEN

HOMECOMING

Crowned regal rulers of Homecoming, Bill Ludes and Carol Griffith, juniors, reigned over a war-time, militaristic campus. Bill Hockett and Marty Lou Norton were elected Prince and Princess. The royal foursome were crowned during the half of the Emporia-Fort Hays football game. In keeping with the Victory theme, thirty-two liaison pilots formed a special guard and escorted the royal couple. The khaki-clad pilots also participated in the Homecoming parade. The Tigerettes and K-Club were in charge of the coronation.

Homecoming activities opened with a varsity at which the King and Queen were elected from fourteen candidates. The following Friday night, the K-Club was in charge of the annual bonfire and pep rally. The competitive stunts were given in the Coliseum, and at 8:30 the Little Theatre group presented their annual play for the alums in Picken auditorium. On Saturday, the Homecoming parade was followed by the tug-of-war across Big Creek between the freshmen and sophomores. Climaxing the activities and football game, Alum Bob

Helman and his band from Fort Riley played for the Homecoming varsity held in the Coliseum.

Homecoming may mean reunion and football game to the upperclassmen and alums, but to the lowly freshman it means a chance to get even. The annual tug-of-war determines whether or not the freshman will continue to wear the insignia. This year due to priorities on metal and cloth the freshmen were blessed with a little piece of green cardboard. These dilapidated pieces, if not given the tenderest of care, easily

became shreds. Hence, the enthusiasm over the tug-of-war. But alas, the freshmen were given a drenching bath in Big Creek, and the green cardboard became a permanent fixture—that is, until Thanksgiving.

On Saturday, all of the organized houses were gaily decorated for the contest. Many a pledge crawled out of bed at six a.m. and began draping crepe paper and other decorations from the porches of the houses. Sigma Alpha Iota won first place on the house decorations as well as first place on their stunt given in the Coliseum on Friday night.



SIGMA ALPHA IOTA PRIZE-WINNING HOUSE DECORATIONS
FRESHMAN-SOPHOMORE TUG-OF-WAR

AND WE "HEIL, HEIL RIGHT IN DER FUERHER'S FACE"





STUDENT COUNCIL

Have you got a new ruling you want brought up—or an old one you want broken down? Take it to the Student Council. They'll fix you up. . . . And so they do. The Student Council is the executive committee of students heading the student body. This organization is composed of all the class presidents plus two representatives chosen from each class. They uphold the constitution, amending and sometimes "reamending" it in order to best serve the interests of the students. In their hands be the strategic questions of how we initiate the freshmen; when and where we dance; and of course, there's always a little disagreement along the sideline as to who is going to win the next game. The organization is capably headed by President Mildred Albertson, junior.

7TH CAVALRY

The 7th Cavalry is appropriately named after General Custer's cavalry because of the high ideals it fosters. It is an honorary organization with a maximum of fifteen members chosen for their scholarship, leadership, service and character. The publishing of the school directory, the "Delator," is made possible through the efforts of the 7th Cavalry, under the leadership of President Robert Postma, senior.

W O M E N ' S LEADERSHIP

The sister organization to the 7th Cavalry is the Women's Leadership Organization. This organization chooses its members, likewise on the basis of scholarship, leadership, service, and character, and the club is limited to fifteen members. Among the duties of this organization this year was the sponsoring of all-school open houses for W.T.S. students, and they are to be commended for their display of patriotism in doing a good deal of the janitor work around the campus. The group is under the leadership of President Mary Wooster, senior.





LEADER

"Hey, Mike, Leader out?"—"Yep, Leader's out!"
 "Grab me a Leader, Bill. Bring it to class!"
 "Want a Leader, Tom?—Here 'tis!"

Thursday mornings bring a world of confusion around the bulletin board when the first hint that the Leader, weekly school paper, is off the press. The Leader now has probably the largest circulation it has ever had; it goes to men in the service to all parts of the world, to say nothing of its subscribers and life members who have long since scattered.

The Leader is headed this year by Annie Laurie Daniels, editor, and John Moden, business manager. Other staff members are:

MARIE HOWK..... *Associate Editor*
 MARY BETH BURNS..... *Assistant Business Manager*
 RICHARD WELTY..... *Sports Editor*
 FRANCES REED..... *Artist*
 PAUL T. SCOTT..... *Faculty Advisor*
 WALTER WALLERSTEDT..... *Printing Instructor*

Production Staff:

ROBERT POSTMA
 LELAND HEINZE
 OWEN SLEIGH

Reporters:

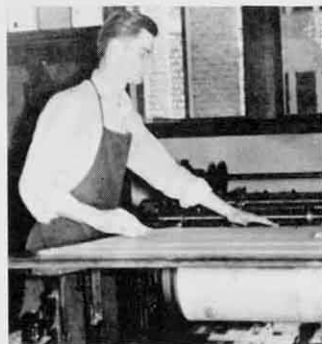
JEAN CALVERT
 MURIEL COOKSON
 ELMER GOETZ
 MARJORIE HUGHES
 ANITA MAE LANDRUM
 WINONA NEUHAUS
 BETTY RADCLIFFE
 MATT SPEAR
 MARTHA WOOSTER



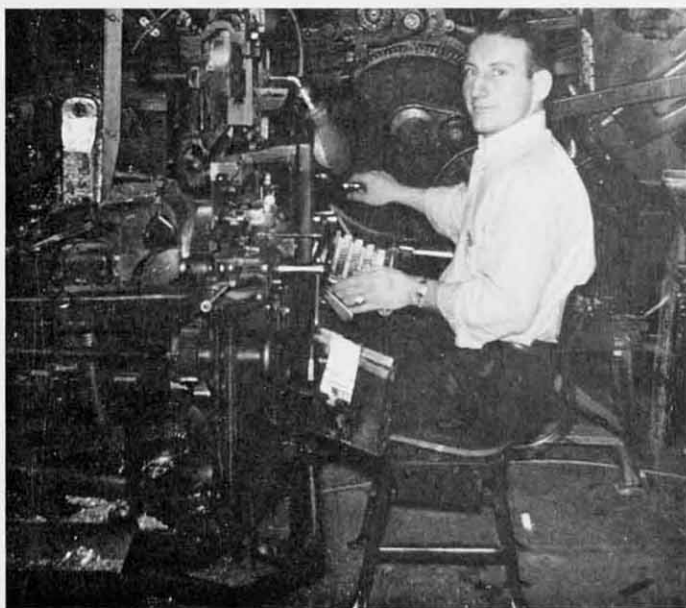
THE MOTHER OF PROGRESS

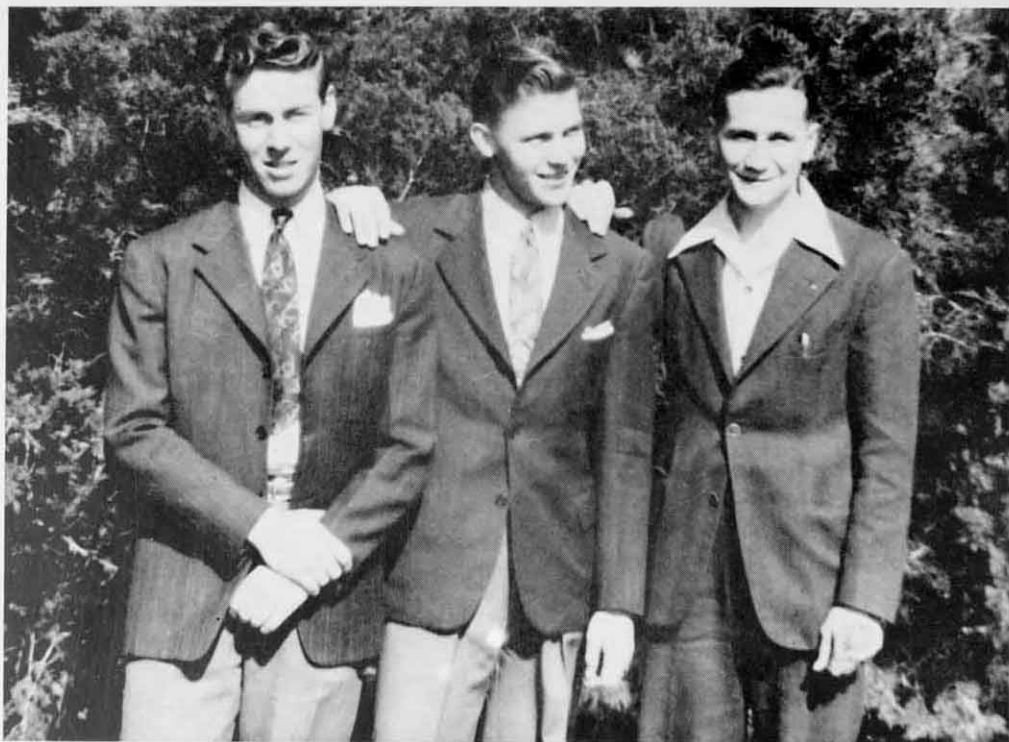
... *Printing*

Figures don't scare Mr. Walter Wallerstedt and his print shop staff, however, 2200 Leaders is a lot of Leaders in anybody's language. Each Thursday morning the papers begin to roll off the college press, and within a short time everybody has his Leader. The job of folding papers on Thursdays was a dreaded chore for the Leader staff until Mr. Wallerstedt put the quartering machine back in working condition. The job of printing the Leaders every week is a big one, but the staff also does other work. All of the college printing, with the exception of the college catalogue, is done by the print shop. The Aarend, edited by Dr. F. B. Streeter, is published quarterly by the college, and contains articles written by students and faculty members. The members of the print shop staff this year are Leland Heinze, Bob Postma, Joe Hamm, and Owen Sleight. Classes in printing and linotype operating are taught by Mr. Wallerstedt.



Pictured above are Bob Postma and Mr. Wallerstedt. Bob has worked in the print shop for several years and is an old hand at settling problems that arise in the shop. Leland Heinze is pictured at the right, operating the linotype.





THE SOPHOMORES

The freshmen get the attention, the juniors get the honor, the seniors get the glory, and the sophomores get the rub.

This is true in lots of ways, but nevertheless the class of '45 has played a pretty important part in school life this year.

Sophomores starred in forensics, drama, music, scholarship, leader-

ship—practically every outstanding campus accomplishment boasted sophomores. And where would upper classes be without sophomores to precede them?

Class officers this year were Jack Miles, president, Bob Tombaugh, vice-president, and Tom Webster, secretary-treasurer.

FAYNE AMSTUTZ
 FERN AMSTUTZ
 MARJORIE ANDERSON
 JOHN ANGEL
 RICHARD ANGEL



RICHARD BATCHELOR
 LAWRENCE BALTHAZOR
 VALERIA BASGALL
 DON BEAMGARD
 LORA BEESLEY



DALE BERNEKING
 KENNETH BEVER
 DOROTHY BICE
 PHYLLIS BLACKBURN
 DOLOROS BOLAN



GRACE BREEDEN
 HAROLD BREJCHA
 DORIS BRUMITT
 DOROTHY BUDDÉ
 LINFORD BULLOCK



FERN BYERLY
 ALLAN CAFFERTY
 HAROLD CALER
 LOUISE CHAPPELL
 FLORENCE CLARK



ROBERT COMSTOCK
 ESTELLA CRABTREE
 MARY CRESS-FLINN
 A. G. CUMMINGS
 JOSEPHINE DAUBER



LEONARD DAVID
 ANNABELLE DAVIS
 MARGARET DE BOER
 KENNETH DECKER
 RUSSELL DICKENSON



EMMA DICKMAN
 WILLIAM DODRILL
 GERALD EDDLEMAN
 AL EHLI
 LYBRAN ENDSLEY



PATILU FARQUHARSON
 GERALDINE FARR
 MILDRED FEATHER
 JACK FINCH
 DEWEY FOSS





BERTHA FOSTER
RUBY FRISHOUR
MAURICE GLEASON
LO KEE GRUMBIN
MARY LUE HALL

HAROLD HICKMAN
CLYDE HINMAN
MADELL HOMLER
LEONARD HOWELL
RUTH HUETLE

BETTE HUENBERGARDT
GEORGE JENSEN
BOB JOHNSON
FLORENCE JOHNSON
PAUL JOHNSON

BOB JORDAN
BOB KEELER
NADINE KELLING
RUTH KIRKPATRICK
DARLENE KLENK

CARL KOBLER
BETTY ELLEN LANDRUM
JOHN LAUNCHBAUGH
WANITA LEWALLEN
RONALD LIVERS

RICHARD LOHMULLER
LORENA LUDER
LINTON LULL
ADOLPH MARIS
LELAND MASON

ED McCALL
HARRY McLEAN
LELAND McDOWELL
CLARICE MCGUIRE
HELEN MCKINNEY

BETTY METCALF
JACK MILES
WANDA JEAN MILLER
EDDIE MOCK
ENGLEBERT MOEDER

DALE MOTT
IRENE MUNZ
WYNONA NEUHOUS

REX ORCHARD
ROBERTA OWENS
MARY JEAN PAGE
DONALD PATTON
LAURA ANN PATTON



ROGER PATTON
DOROTHY POLSON
BETTY LOU RAVEN
ARLEEN RAY
JAMES REED



LYLE ROBINSON
RICHARD ROEMER
ROSCOE RORABAUGH
NORMA JANE ROWNTON
ROBERT RUNDLE



RICHARD SAMUELSON
ROBERT SCHNECK
OLGA SCHWARTZKOPF
CHESTER SCOTT
LA VORA SEBELIUS



LAWRENCE SEBELIUS
HERBERT SETTLES
TOM SHOOK
MARLEEN SKERN
KENNETH SLEIGH



ROBERT OWEN SLEIGH
ROYCE SLOAN
AVIS SMITH
IVAN SMITH
NORMA JEAN SMITH



MATT SPEAR
MARJORIE STEIN
BEVERLY STRAIN
GENE STRAMIEL
IRENE THORNBURG

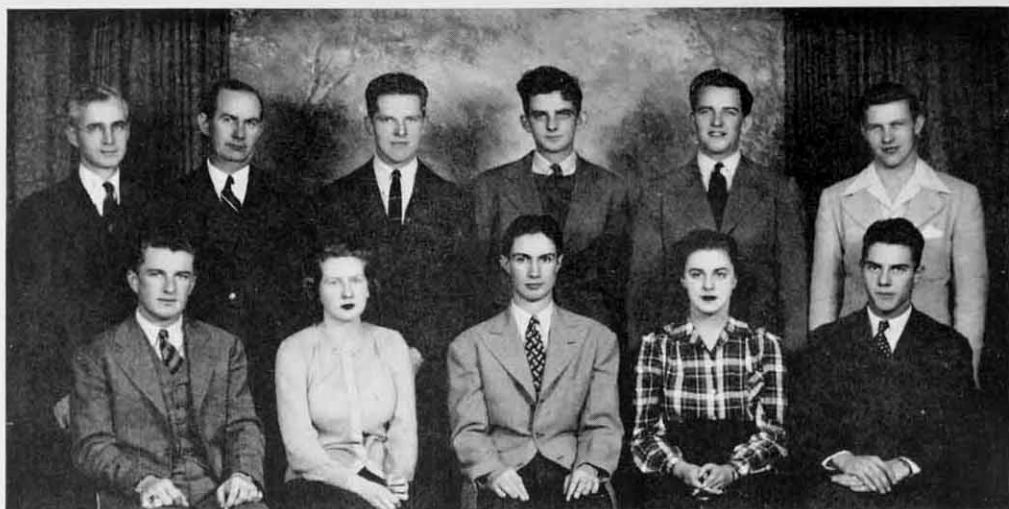


PHILIP THULL
BONNIE TILLMAN
ROBERT TOMBAUGH
JUNIOR WAGNER
TOM WEBSTER



RICHARD WELTY
WINIFRED WESTON
MARIE WILSON





PRE-MEDIC CLUB

One of the newest organizations added to the activities at Fort Hays is the Pre-Medic Club, an organization whose purpose is to unite all students who are planning to enter the study of medicine. The idea of the club was originated by Bob Jordan, sophomore, president of the group. Meetings are held bi-monthly, and guest speakers are invited.

PI KAPPA DELTA

Pi Kappa Delta is a national honorary forensic fraternity, composed of students who have competed in five intercollegiate debates or qualified in oratory or extempore. John Felible is president of the Fort Hays chapter of Pi Kappa Delta.



MR. START OFFERS HIS CONGRATULATIONS

ANYTHING FOR A GOOD ARGUMENT

Members of the Fort Hays Debate Team again won honors in various contests this year. Tom Webster and Helen McKinney represented the college at the debate tournament held at McPherson on January 9. In the tournament held at Sterling on March 6, Helen McKinney and Ruth Cossell tied for second place. Tom Webster and George Omer also competed in this contest. In the Province of the Plains (Pi Kappa Delta province including Kansas, Nebraska, and

Colorado) contest first prize in men's extempore speaking was won by George Omer, and first prize in women's extempore was won by Helen McKinney. Raymond Shaw and Ruth Cossell also represented Fort Hays in this contest. Pi Kappa Delta sponsored the high school debate tournament for the eighth consecutive year. Eleven high schools and twenty-eight teams were represented in the contest held this fall.



CLINTON KELLER AND RUTH COSSELL,
PRINCE AND PRINCESS



STUDENTS ELECT KING AND QUEEN
AT ALL-SCHOOL ELECTION

Life Goes To The Reveille Ball

Friday the thirteenth of November was the date of the annual Reveille Ball, but the date didn't put a damper on the spirits. The Ball was a success in spite of traditional superstition. This was the fourth annual Reveille Ball to be held at the college. The dance was in the Coliseum and the music was



furnished by Garnis Doner and his orchestra. . . A patriotic theme was carried out in the decorations. United States flags were suspended from the ceiling, and the flags of the Allied nations were placed along the sides of the arena. Large posters advocating the purchase of War Bonds, the conservation of rubber, and other patriotic measures were hung along the walls of the arena. . . The crowning event of the evening, so to speak, was the crowning of the Reveille King and Queen. The method of choosing the Reveille Royalty this year was changed somewhat. Instead of having the orchestra make the final selection, the student body made the choice. Each organization submitted the names of nominees, and from this group five candidates for king and five candidates for queen were chosen at an all-school election. At another election the students again voted for king and queen. The results of this election were not announced until the crowning of the king and queen the night of the ball. The five candidates chosen for queen were: Mildred Albertson, Ruth Cossell, Annabelle Davis, Valarie



MILDRED ALBERTSON, QUEEN JACK MILES, KING

STUDENTS DANCE AT ALL-SCHOOL FORMAL



Lamoree, and Anna Wiesner. Mike Biggs, Clinton Keller, Jack Miles, Keith O'Connor, and Bob Postma were chosen as candidates for king. The crowning of king and queen was held during the dance. Mildred Albertson, member of Sigma Alpha Iota, and Jack Miles, member of Tau Kappa Epsilon, were crowned Reveille King and Queen by Ruth Cossell, member of Delta Sigma Epsilon, and Clinton Keller, member of Phi Sigma Epsilon, Reveille Prince and Princess. The other six candidates were members of the royal party and assisted in the crowning ceremony.

BAND

When you think of football games and pep rallies you immediately think of the band. Games would not be as lively as they are and enthusiasm would soon run low without the support of the college band. This year a small pep band was organized under the leadership of William Hugh Miller. The pep band replaced the marching band, and played at all pep rallies. The regular college band played at all of the games.



ESTELLA CRABTREE, RUSSELL DICKENSON, JOSEPH DUELL, WILLIAM EVANS, ALBERT GIEBLER, JAMES HOWER, ARRIS JOHNSON, ELDA JOHNSON, JOHNETTA KAISER, JEAN KENYON, DARLENE KLENK, EVELYN KRAUS, GRACE KUMBERG, WILBER KLEMM, KATHRYN LAW, NAOMI MAGLEY, MIRIAM MOORE, WARREN NEBEL, CATHERINE OSTERFUND, BETTY PATTON, LAURA ANN PATTON, DALE PORTSCHY, DANIEL ROBERTS, BETTY SALMON, EVELYN SIMONS, L. K. SPRINGER, ALETHA UNRUH, ELYNOR WALKER, JEAN WEIRAUCH

★





★

MILDRED ALBERTSON, BERNIECE BRUMMITT, DORIS BRUMMITT, ROMA BRUNKAU, JEAN CALVERT, HOYLE CARPENTER, LOIS CARPENTER, ANNIE LAURIE DANIELS, HELEN DEANE, WILLIAM DODRILL, BILL DODSON, BONNIE EASTLACK, BARBARA EDDY, DOROTHY FELLERS, MARY LOU FELLERS, LUCILLE FELTEN, PATRICIA FELTEN, WINIFRED FLORA, DEWEY FOSS, SHIRLEY FRICKER, CAROL JEAN FRICKER, CAROL JEAN GANTNER, ROBERT GANTNER, ROMA GATEWOOD, ALBERT GIEBLER, VERGENE GLEASON, WILLARD GUY, HENRIETTA HAUSCHILD, MILDRED HEITSCHMIDT, GLENN HORNER, JAMES HOWER, MARVIN INLOES, ARRIS JOHNSON, ELDA JOHNSON, JEAN KENYON, EVELYN KRAUS, VALARIE LAMOREE, ANITA MAE LANDRUM, KATHRYN LAW, MARJORIE LEBSACK, RALPH MacKENZIE, MRS. CLARA MALLOY, BASIL MARHOFER, TED McNUTT, VIVIEN MECKEL, MIRIAM MOORE, GERTRUDE MORRISH, VIRGINIA OSHANT, VELMA PORTSCHY, VIRGINIA LEE PRATT, ERMA RIEDEL, RUTH RIGGS, GAIL RUSSELL, BETTY JEAN SCHMUTZ, MARJORIE STEIN, ROBERT TWEEDY, ALETHA UNRUH, WANDA VINE, ELEANOR WALKER, MARION WITT, TOM WEBSTER, ALMA WEIGEL, RICHARD WELTY, CYNTHIA WOOSTER, MARTHA WOOSTER, MARY WOOSTER, HELENE WURM, BOB WYNNE

ORCHESTRA

The Fort Hays Symphony Orchestra, under the direction of Carl Malmberg, has had a successful year. The orchestra played at the teachers meeting held at the college this fall. A concert was presented on February 28, in Sheridan Coliseum. Ernst Wolff, renowned lieder singer, was guest conductor at this concert. The symphony orchestra was organized in September as a community group with the college orchestra as its nucleus. It will present another concert this spring.





THE A CAPPELLA CHOIR IS PICTURED ON THE STEPS IN THE LIBRARY

A CAPPELLA CHOIR

“Sweet music makes life brighter—” and such is the music sung by the A Cappella Choir under the direction of William Hugh Miller, head of the music department of Fort Hays State. The choir forms the core of the group that gives the annual presentation of the “Messiah” in December. Instead of using out-of-town soloists in the “Messiah” this year, college students were chosen to sing the solo parts: Hobart Davis, a member of the music faculty, sang the tenor solos. Helen Wurm, junior from Oberlin, sang the soprano solos. The contralto solo parts were sung by Vergene Gleason, junior from Radium, and Valarie Lamoree, freshman from Larned. Matt Spear, freshman from Liberal, sang the baritone solos.



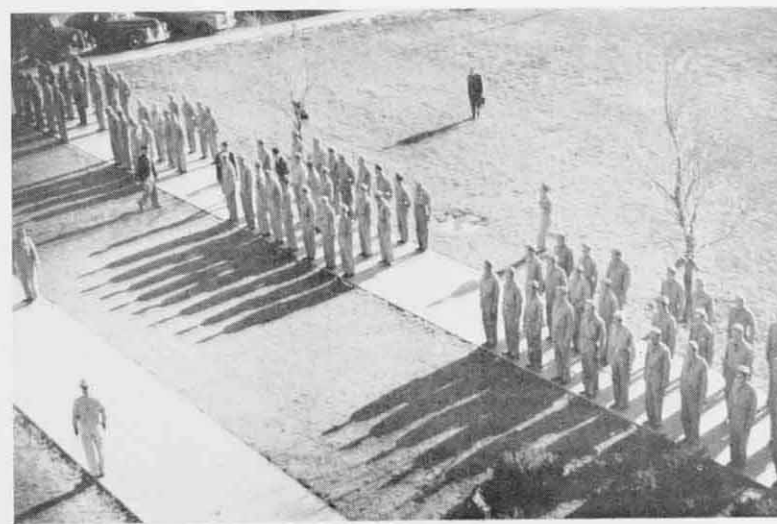
VALARIE LAMOREE

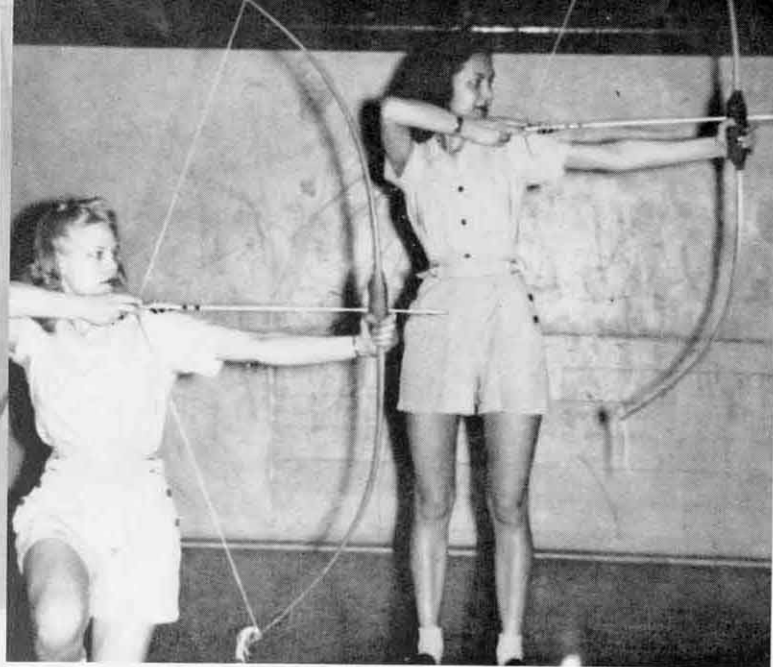
HELENE WURM

VERGENE GLEASON

W. T. S.

When school opened last fall, the students returned to find the khaki uniforms of the Civilian Pilots a part of campus life. The college had contracted to train 440 pilots as a liaison group. In future years, Fort Hays can boast of having the largest liaison pilot training school in the United States. When enlistment in the C.P.T. was abolished by Presidential order, the program was changed to the War Training Service, and conducted along lines similar to the C.P.T. The uniform was also changed during the year from khaki to green. Dr. George A. Kelly devoted his time, with the exception of his psychological clinic, to the W.T.S. program. The program was abandoned late this spring in order to accommodate the Army Air Corps College Detachment.





A COUPLE OF FEMININE WILLIAM TELLS

GIRLS' SPORTS

MEMBERS OF ORCHESIS POSE IN FRONT OF THE MIRROR IN THE LITTLE GYM



When it comes to badminton, volley ball, archery, basketball, or dancing, the Fort Hays coed is not to be outdone. Intramural sports occupy a lot of the spare time of the Greeks and organized houses. . . The Orchesis Club, under the direction of Elizabeth Barbour performed at the New Year's Eve frolic. An added feature was the boys who were the girls' partners in the square dancing.

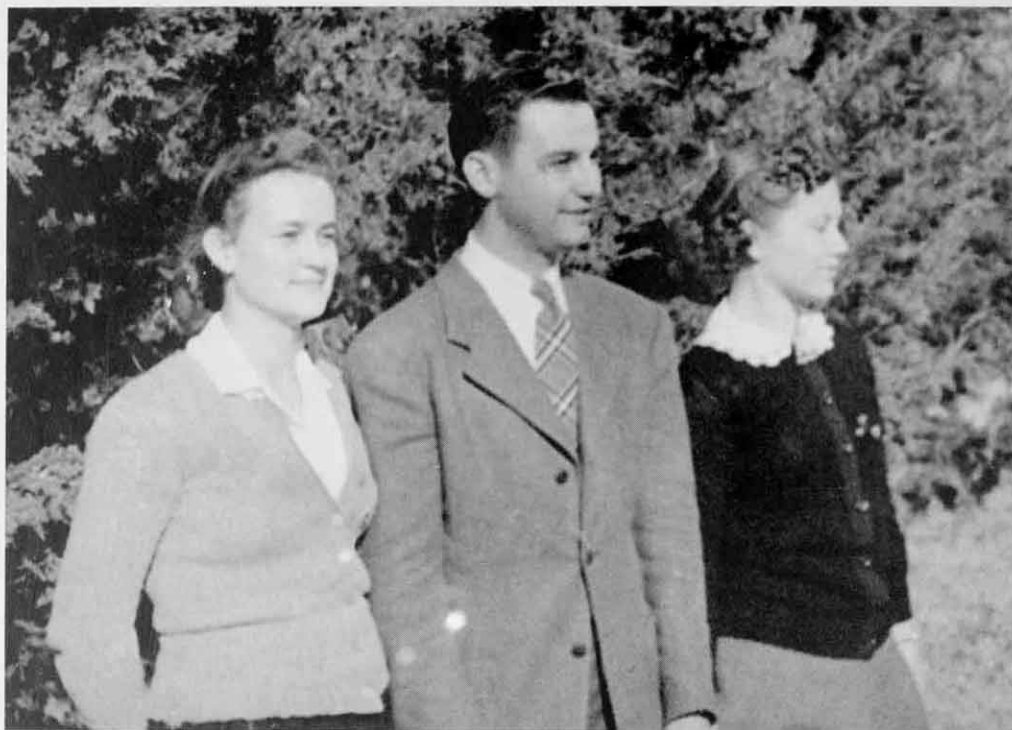
Audrey Laff is president of the Women's Athletic Association which is open to girls interested in athletics. . . Members of the Duck Club are still enjoying their life saving practices and swimming stunts. Duck Club president is Bonny Tillman.



IN CASE OF DROWNING CALL ON ONE OF OUR PRETTY RED CROSS LIFE SAVERS

HEALTHY ARE THESE FORT HAYS AMAZONS





THE JUNIORS

"I had the craziest dream" was the theme chosen by the juniors for the decorations at the Junior-Senior Prom this year. The dream—imagine yourself being able to say to the grocer, "Send me two hams and a sack of sugar" without having to produce your ration book, or, better still, how would you like to be able to buy six pairs

of shoes instead of three? Yes, the dream was crazy, but the students enjoyed it. Best of all (the part that wasn't crazy) was the music furnished by Alum Tiny Helman and his band from Fort Riley, Kansas. Junior class officers elected last fall were: Byron Blair, president; Helene Wurm, vice-president; Evelyn Daniels, secretary-treasurer.

CAROLINE ADAMS
RUTH ADAMS
MILDRED ALBERTSON
JOHN BARRETT
LAWRENCE BECHTOLD



IDA BERSLEY
BYRON BLAIR
MARION BOSS
MARY BOTTS
IMOGENE BRECKENRIDGE



ROBERTA BROWN
MILTON BULLOCK
JEAN CALVERT
ELMO CARMICHAEL
KENTON CASAD



ETHEL CATHCART
THELMA CLARK-CHIPMAN
DALE COMBS
RUTH COSSELL
DEAN CURRY



EVELYN DANIELS
JULIA DAVENPORT
NORBERT DIETZ
MILTON EVERHART
ARNOLD GACKSTATTER



NORMA GIESS
VERGENE GLEASON
EDGAR GRASS, JR.
CAROL GRIFFITH
BETTY HADLEY



JACK HAGEMAN
ALFRED HALL
JOE HANKS
ELAINE HARRENSTEIN
HERMAN HARRIS, JR.



JOAN HAZLETT
LELAND HEINZE
MARIE HOWE
RAY HUFFMAN
JANE HULL





ALBERT HUMBRD
 HARRIET HUNSLEY
 NORMAN JOHNSON
 ROBERT KEENAN
 EVELYN KRAUS

EUGENE LONNON
 LUCILLE LOVE
 MARGARET LUND
 LA RENE MILLER
 LAWRENCE MOCK

MARJORIE MORRIS
 GERTRUDE MORRISH
 MARJORIE NEPTUNE
 KAY NEWTON
 HUBERT NUSS

KEITH O'CONNOR
 GEORGE OMER
 BERYL PALMER
 BETTY PATTON
 GALE REILLY

DON SHAFER
 WARREN SCHMIDT
 GAIL SCHROEDER
 DONALD SHARP
 EVELYN SIMONS

MARJORIE SPREIER
 BETTY ALYBES SQUIRE
 HAMPTON STEELE
 BETTY SUCHSLAND
 HAROLD SUTLEY

DOLGERS THOLEN
 K. C. THOMAS
 VERNA JANE THOMPSON
 WARREN TRIMMER
 EDA JEAN WEBB

ALMA WEIGEL
 MAXINE WHITTED
 ANNA MAE WOLFRAM
 HELENE WURM



ENGINEERS * * * CLUB * * *

Membership in the Engineers Club is open to engineering majors or to those who are interested in engineering. The group has a large number of members who are not engineering majors, but who feel that they may benefit by being members of the organization. Problems of modern engineering are discussed at the weekly meetings. Active participation in the discussions and meetings is required of all members. Richard Radnor is president of the Engineers Club.

SIGMA PI SIGMA

The purpose of the National Physics Honorary Society, Sigma Pi Sigma, is to encourage the study of physics and to recognize high scholarship in that field. The

group is a relatively new group on the campus, having been organized in 1939. President of Sigma Pi Sigma this year is Robert Calfee.





CUSTER HALL

Half the fun of going to college is living in a dormitory and the girls who live at Custer Hall receive their share of the fun. Just across the bridge on Big Creek lies Custer Hall, appropriately named after the wife of General Custer. For sixteen years Mrs. Ethel McKenna has been Mother Mac to the girls residing at Custer Hall. Mary Jeanne Bolan was president of Custer Hall the first semester, and Mrs. Bessie Snyder the second semester. Two informal parties were held this year.



WESLEY HALL

Fifty-four girls called Wesley Hall, girls' dormitory, home this year. Phyllis Blackburn was president of the organization both semesters. The Wesley girls are justly proud of their spacious parlor which, under the direction of their capable housemother, Mrs. Martha L. Walters, underwent a complete redecoration job. The girls entertained with a house party last fall and the important spring event was the annual spring formal. These girls are doing their part in the war effort. During the defense stamp and bond drive, Wesley Hall ranked high having sold more defense stamps than any other organization on the campus.



Y. W. C. A.

Mary Jeanne Bolan has been the competent leader of the Young Women's Christian Association this year. The Y.W.C.A. joined the Y.M. and the Newman Club in sponsoring Religious Emphasis Week, and the morning Quiet Hour. The Y.M. and Y.W. held joint meetings the second semester because of the drop in enrollment.

Newman Club

The Newman Club is a religious organization of Catholic students in a secular college. The Fort Hays Newman Club is a member affiliated with the National Newman Club, and a member of the central states province. This year the Newman Club joined the Y.M. and Y.W. in sponsoring Religious Emphasis Week.

Y. M. C. A.

The Young Men's Christian Association, under the leadership of Bob Jordan, has helped the men students of the campus in the Christian solution of problems confronting them. The Y.M. again sponsored the Book Exchange and helped sponsor the annual Religious Emphasis Week.



Delta Epsilon

Delta Epsilon is a national honorary science fraternity embracing all branches of science. Students wishing to become members of Delta Epsilon must be majors in some field of science and of senior standing. They must have a high scholastic standing. The sponsor of the group is Dr. Earl Swafford.

International Relations

The International Relations Club is open to students with 12 hours of college credit, but membership is limited to 35. The purpose of the group is to become acquainted with the problems that confront us as one of the leading nations in the world. Noel Runyan is president of the group.

Pi Gamma Mu

Bill Hockett is president of Pi Gamma Mu, national honorary social science fraternity. Membership in the group is limited to social science students of junior standing. New members are chosen twice a year by the active faculty members.



Quill Club

The Quill Club is composed of students who display literary ability. To become a member a student must submit a manuscript that meets the approval of the group. At the bi-monthly meetings the members read their manuscripts for the criticism of the group. Betty Hubert is the chancellor of Quill Club.

Kappa Pi

Any student who is a major or minor in art and whose grade point is satisfactory is eligible for membership in the Nu chapter of Kappa Pi, national honorary art fraternity. The sponsor of Kappa Pi is Mabel Vandiver.



Home Economics

The home-makers of tomorrow are the Home Economics Club members of today. The Home Economics Club is open to majors and minors in home economics. Many interesting and worthwhile programs are held. Ruth Cossell is president of the group.

Second Generation Club

The members of the Second Generation Club are those whose parents attended Fort Hays Kansas State a generation ago. The organization has a large membership. Its sponsor is Mrs. Nita Landrum.



THE OBJECT IS TO GET THE BALL IN THE BASKET

BASKETBALL

The men of the basketball squad started the season with high hopes. Eight lettermen returned, and with the crop of likely material Coach Gross looked forward to a bright record. The starting team of the year before had been almost untouched by graduation and most of the boys were in the naval reserve, which would allow them to complete the current year.

Clinton Keller, senior forward, and Warren Haxton, senior guard, were elected co-captains for this year. Keller had three letters and Haxton, two. Warren Settles, another senior with two letters, played the center position. Wayne Bichler, a senior with one letter, was Haxton's running mate, playing the other guard position. Herbert Settles, a sophomore with one letter, played the other for-

ward position. The other returning lettermen were Bill Ludes, Gene Stramel, and Richard Samuelson.

Warren Haxton, high scorer of the Tiger team, with 251 points in seventeen games, was chosen by the sports writers to fill the guard position on the all-conference team. Keller and Warren Settles won berths on the second team.

The first game of the season was on the home court and was won with such a small effort that it could hardly be called a pre-season warm-up game. The second game with Bethany proved to be of the same calibre.

The first loss of the season was to Washburn. This was also the first CIC game and the first team to be played on the first road trip for the Tigers. According to the dope sheets, Washburn would

probably wind up in the conference cellar—she beat the Tigers 30-36. On the same trip the Tigers took their revenge on the Pittsburg Gorillas to the tune of 53-38.

Emporia State was not quite as easy a target as she appeared at first. Despite the high scoring of Reser, the Tigers won 60-54. McPherson was the next victim on the Bengals' list, and they fell to the score of 46-37.

Due to traveling difficulties, the

SEASON'S SUMMARY

Opponent	Hays	Opp.
Kearney	67	25
Bethany	43	13
Washburn	30	36
Pittsburg	53	38
Emporia State	60	54
McPherson College	46	37
St. Benedicts	44	24
St. Benedicts	53	35
Southwestern	40	50
Emporia State	43	41
College of Emporia	60	22
Bethel College	63	38
Pittsburg	80	67
Washburn	35	34
Southwestern	35	63
McPherson	59	43
Walker Airbase	77	24

St. Benedicts' Ravens played both games on the Fort Hays court and were thoroughly trounced in the two rough and tumble games, the first score 44-24 and the second 53-35.

The second conference defeat was administered by the Southwestern boys in the score of 50-40.

The next road trip included the two Emporia teams. Emporia State again tried the Tigers' scoring ability and lost by the close score of 43-41. The next night College of Emporia proved to be no obstacle at all with Fort Hays pouring in thirty points in each half, and the C. of E. boys only 22 in the entire game.

Bethel was the next team to fall under the Fort Hays roller by a score of 63-38. The highest score ever piled up by the Fort Hays team since the appearance of Coach Gross on the local coaching scene was made in the second game with the Pittsburg Gorillas when the Tigers threw 80 points through the hoop to the Gorillas' 67 points.

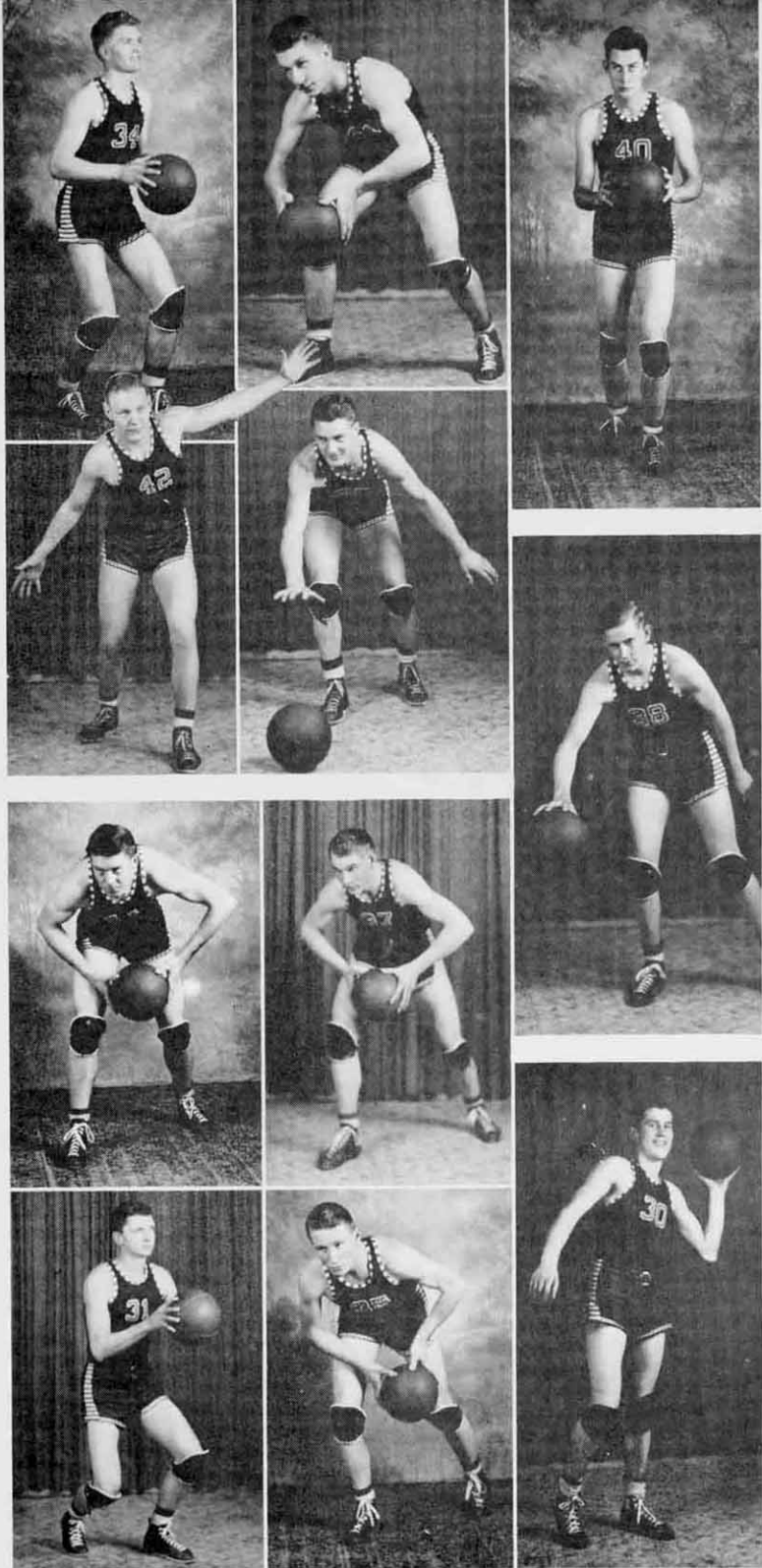
The second game with Washburn was almost feared by the Tigers since the loss of that game would definitely put the Hays team in the third place, but the team won by the slight margin of one point—35-34.

The second loss to Southwestern was even more decisive, since the final score was 63-35. McPherson again suffered at the hands of the Tigers, losing again by the score of 59-43.

A post-season game was played by the Tigers with the Hays-Walker Airbase. The proceeds of this game went to buy recreational equipment for the base. The score of the Bomber boys was not very impressive compared to the high scoring of the Tigers. At the final gun the score stood at 77-24.

The final CIC standings were:

	Won	Lost
Southwestern	9	1
Fort Hays	7	3
Pittsburg	7	3
St. Benedicts	4	6
Emporia State	2	8
Washburn	1	9





BERNICE MOCK

JACK GRANT

JEAN WEIRAUCH

CHEER LEADERS

TIGERETTES



After tryouts in the Coliseum, the student body elected Jean Weirauch, Jack Grant, and Bernice Mock to be the cheerleaders for the year. These three students led the yells at the football games, basketball games, and at the pep rallies held before games. The success of the snake dances was due to the able leadership of these cheerleaders.

The Tigerettes form the core of the cheering section at all athletic events and pep rallies. Members of the Tigerettes are chosen on a proportional basis from the sororities and independent organizations on the campus. New members are chosen each semester to replace those leaving school. Ruth Cossell is president of Tigerettes.

When a Tiger earns a letter in a major sport he becomes eligible for membership in the "K" Club. The members of the "K" Club enforce campus regulations. They see to it that the "freshie" wears his prescribed insignia even if drastic means (lipstick, or the meat line) have to be resorted to. The "K" Club members also teach newcomers that the grass on the campus lawns is to be looked at and not walked on. "K" Club members attend athletic events in a body and help cheer the team to victory. The cokes and candy sold during games is sold by members of the club, and the proceeds are used for their annual spring party. President of the "K" Club is Warren Haxton.

"K" CLUB





PICTURED HERE ARE THE SECOND SEMESTER OFFICERS OF THE PAN-HELLENIC AND INTER-FRATERNAL COUNCILS

THE GREEKS

Have several
words for it

The activities of the sororities and fraternities are wisely planned by the Pan-Hellenic and Inter-Fraternal Councils. Representatives are chosen from each sorority and fraternity, and troubles between the groups are ironed out. Rules for rushing and rush week activities are made and enforced by these two groups. Greek open houses are sponsored every other week by these organizations. Each semester the Pan-Hellenic council sponsors a formal to which the members of the Pan-Hellenic sororities are invited.



Campus Cuties

Mrs. Jasper Parsons, House-mother; Verna Jane Thompson, President; Shirley Clarke, Vice-president; Harriet Hunsley, Treasurer; Roberta Brown, Secretary;

Eleanor Murray, Sponsor. *ACTIVES:* Julia Davenport, Mary Ethel Earl, Ruth Kirkpatrick, Shirley Clarke, Harriet Hunsley, Verna Jane Thompson, Roberta Brown, Betty McCauley, Carol Griffith, Frances Locker, Grace Kumberg. *Pledges:*

Anna Frances Wiesner, Loretta Novak, Patricia Lawless, Josephine Winningham, Marjory Anderson, Ruby Loreg, Bernice Mock, Pauline Rogers, Mildred Feather.

Alpha Sigma Alpha



Smart Smoothies

Mrs. Lora Holmes, House-mother; Louise Green, President; La Rene Miller, Vice-president; Fern Byerly, Secretary; Ruth Cossell, Treasurer; Maurine Bergland, Sponsor. ACTIVES: Louise Green, Bonnie Tillman, Margaret Lund,

Norma Jean Smith, Avis Smith, Betty Suchsland, Ruth Cossell, Thelma Graf, Norma Jane Rowton, La Rene Miller, Beth Gault, Helen McKinney, Fern Byerly, Ada Lillieqvist, Dorothy Polson, Thelma Chipman, Marjorie Morris, Lora Fern Beesley, Laura Ann

Patton, Wilma Noll, Jane Hull, Beverly Strain, Mary Carswell. PLEDGES: Lorene Horner, Virginia Halsey, Opal Williams, Juanita Irby, Wilma Clough, Betty Huenergardt, Lois Timken, Mija Moden.

Delta Sigma Epsilon

FOUNDED IN 1914 AT OXFORD, OHIO, INSTALLED F.H.K.S.C. 1925



Righteous and Real

Erma Riedel, President; Mildred Albertson, Vice-president, Audrey Laff, Secretary; Beverly Strain, Treasurer; Cora Bibens, Sponsor. ACTIVES: Marilyn Abercrombie, Caroline Adams, Mildred Albertson, Fayne Amstutz, Fern Amstutz, Elsie Beesley, Ida Beesley, Mary Beesley, Dorothy Bice, Phyllis Blackburn, Doloros Bolan, Mary Jeanne Bolan, Elinor Brining, Roberta Brown, Mary Beth Burns, Fern Byerly, Louise Chappell, Maxine Cook, Virginia Craft,

Evelyn Daniels, Vivian Ewy, Bertha Mary Foster, Ruby Freshour, Shirley Fricker, Dorothy Frye, Imogene Gick, Ruth Gilger, LoRee Grumbein, Betty Hadley, Elaine Harrenstein, Esther Hueftle, Ruth Hueftle, Jane Hull, Elda Johnson, Jean Kenyon, Darlene Klenk, Audrey Laff, Wanita Lewallen, Mabel Love, Naomi Magley, Marjorie McGrath, Clarice McGuire, Jeanne McKean, Marcine Mellick, Miriam Moore, Irene Morrel, Mildred Olson, Mary Jean Page, Jewell Porter, Arleen

Ray, Betty Reeves, Erma Riedel, Ellen Louise Replogle, Olga Schwartzkopf, LaVora Sebelius, Leah Shipley, Evelyn Simons, Creta Sproul, Betty Squire, Beverly Strain, Lois Timken, Eda Jean Webb, Maxine Whirted, Rosalie Wilds, Naomi Yeagy. PLEDGES: Dorothy Jean Button, Margaret DeBoer-Nixon, Betty Fertig, Katherine Healzer, Grace Kumberg, Ruth Laizure, Kathryn Law, Dorothy Ogier, Clarice Stewart, Edith Vermillion, Violet White.

Kappa Phi



Musical Maidens

Mrs. Bessie Daniels, House-mother; Velma Portschy, President; Shirley Fricker, Vice-president; Mildred Albertson, Secretary; Aletha Unruh, Treasurer; Lucille Felton, Sponsor. Actives: Mildred Albertson, Jean Calvert, Annie

Laurie Daniels, Shirley Fricker, Mildred Heitschmidt, Martha Lou Norton, Velma Portschy, Martha Wooster, Mary Wooster, Aletha Unruh, Lucille Love, Evelyn Simons, Wanda Jean Miller, Gertrude Morrish, Helene Wurm,

Vergene Gleason, Doris Brumitt, Marjorie Stein, Alma Weigel, Miriam Moore. PLEDGES: Kathryn Law, Barbara Bowman, Elynor Walker, Valarie Lamoree, Laura Ann Patton, Viola Wilson, Elda Johnson.

Sigma Alpha Iota

FOUNDED IN 1903 AT ANN ARBOR, MICHIGAN, INSTALLED F.H.K.S.C. 1931



Trident and True

Mrs. O. E. Bolinger, House-
mother; Nadine Mallory, Presi-
dent; Kay Newton, Vice-president;
Loraine Hickey, Secretary; Elsie

Beesley, Treasurer; Gladys Patton,
Sponsor. ACTIVES: Nadine Mallory,
Kay Newton, Elsie Beesley, Opal
Zimbelman, Lois Simons, Grace
Resch, Loraine Hickey, Mary

Cress-Flinn, Betty Pollack.
PLEDGES: Ida Beesley, Emma Dick-
man, Anna Locker, Verona
McKinley.

Sigma Sigma Sigma



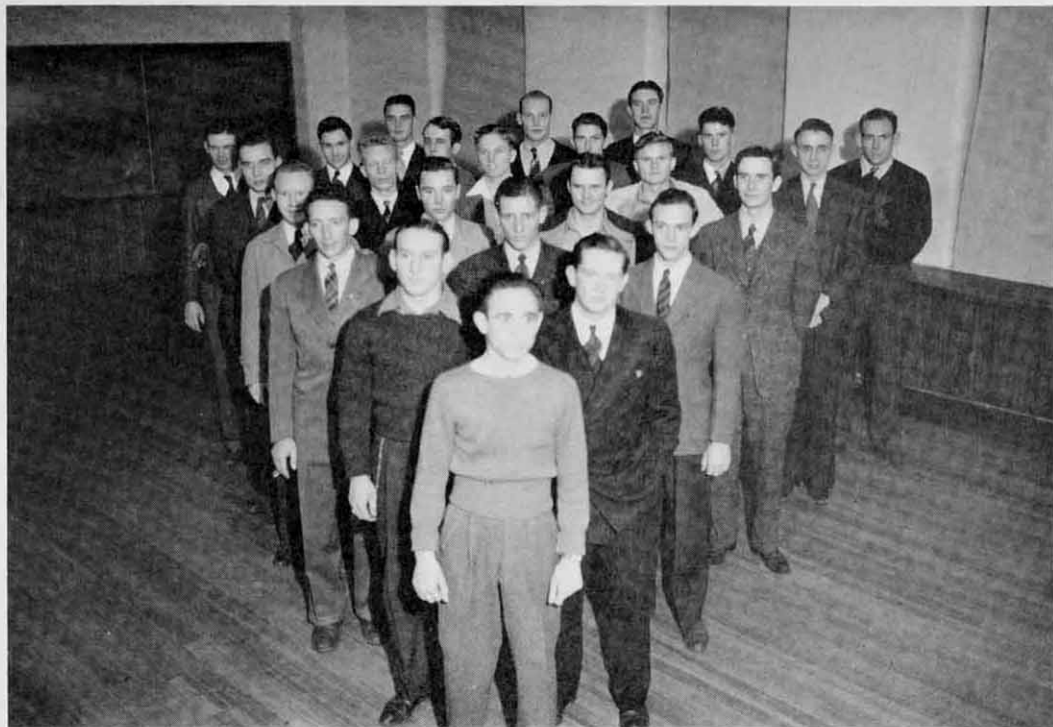
Vim, Vigor and Vitality

Mrs. Frances Goodnough, Housemother; Esther Sim, President; Dolores Tholen, Vice-president; Dorothy Fellers, Secretary; Caroline Adams, Treasurer; Edna Triplett, Sponsor. ACTIVES: Esther Sim, Dorothy Fellers, Imogene

Gick, Blanche Renner, Wilburma Bright, Dolores Tholen, Caroline Adams, Betty Ellen Landrum, Annabelle Davis, Mary Lue Hall, Robertta Owens, Anita Mae Landrum, Muriel Cookson, Florene Esther, Betty Metcalf, Mary Beth Burns, Margaret Oldham, Marjorie McGrath, Alice Mahree

Meade, Corine Whitham, Patilu Farquharson, Valeria Basgall, Thelma Riggs. PLEDGES: Laurene Kruse, June Schweitzer, Nancy Esther, Florence Clark, Ruth Deitz, Linda Deines, Doris Markel, Marcella Brungardt.

Theta Sigma Upsilon



Witty Wisemen

Mrs. Jessie Miller, House-mother; Warren Settles, President; Wayne Fisher, Vice-president; Dean Curry, Secretary; Milford Flinn, Treasurer; Walter Wallerstedt, Sponsor. **ACTIVES:** John Angel, Richard Angel, Dale Berneking, Bob Beery, Eli Boucher,

Richard Cook, Dean Curry, Allen Cafferty, Dale Combs, Bob Comstock, Leonard David, Wayne Fisher, Milford Flinn, Joe Hanks, Leland Heinze, George Helm, John Launchbaugh, Bob Leathers, Ronald Livers, Joe Mangano, Adolph Mares, Harry McLean,

Dale Motr, Herbert Settles, Warren Settles, K. C. Thomas, Warren Trimmer, Mark Wright. **PLEDGES:** Forrest Button, Jack Campbell, Bill Harvey, Bill Helm, Wilbur Hodson, Herman Harris, Kenneth Kauffman, Dick Lohnes, Wayne Leuszler, Gene Schmidt.

Phi Delta Chi



Brothers of Song

James Hower, President; Harry Christman, Vice-president; Horace Jacobini, first semester Secretary; Charles Larzalere, second semester Secretary; Edgar Grass, Jr., Treasurer; William Hugh Miller, and Hoyle Carpenter, Sponsors.

ACTIVES: Arris Johnson, Harry Christman, Horace Jacobini, Edgar Grass, James Hower, Tom Webster, Charles Larzalere, Paul Johnson, Dewey Foss, Richard Batchelor, Albert Giebler, Linus Drees, Chet Scott, Linton Lull, Russell Dickenson, Bob Grass, Charles Lamoreux, Wilbur Lohrey, Paul Plumb, Hugh

Cowan, Glenn Horner, Matt Spear, Robert Gantner. PLEDGES: Warren Kopke, Norman Reinking, Bill Evans, Wilbur Klemm, Willard Brumitt, Gene Gering, Darrell Ikenberry, Dale Portschy, Faunt Le Roy Ekey.

Phi Mu Alpha



Girls' Paradise

Mrs. Earnest, Housemother; Clinton Keller, President; Warren Haxton, Vice-president; Bill Read, Secretary; Roger Arensdorf, Treasurer; Raymond Welty, Sponsor. ACTIVEs: Roger Arensdorf, Lawrence Bechtold, Wayne Biehler, Marshal Brewer, Kenton Casad, Louis Delleit, Norbert Dietz, Howard Gant, John Hatcher,

Warren Haxton, Clinton Keller, John Lane, Richard Lohmuller, Gene Lonnar, Bill Ludes, Harold Miller, Keith O'Connor, Bill Read, Walter Ridenour, Roscoe Roraugh, Gail Schraeder, Donald Sharpe, Jack Sloan, Richard Welty, Bill Whitaker, Bernard Wolford, Bill Zuercher, Lyn Stewart, Carl Kobler, Don Beamgard, Richard Roemer, Richard Samuelson, Ed-

win Vann, Junior Wagner, Norman Johnson, Keith Beardmore. PLEDGES: Daniel Roberts, Rodney Beamgard, Leland McDowell, Albert Riedel, Gene Stramel, Dean Townsend, Gene Luce, George Jensen, Jack McCullough, Jim Gilger, T. J. Carlile, Ivan Smith, Tom Hunsicker, Ray Huffman, Jack Wolfe, Paul Andre.

Phi Sigma Epsilon



Dream Men

Mrs. J. A. Davidson, House-mother; Lawrence Mock, President; Hubert Nuss, Vice-president; Edward Mock, Secretary; Robert Alley, Treasurer; James R. Start, Sponsor. **ACTIVES:** Robert Armstrong, Robert Alley, Elmo Carmichael, Orlan Carmichael,

Michael Biggs, Raymond Custer, Clyde Hinman, James Hopper, John Moden, William Shook, Robert Johnson, Edward Mock, Lawrence Mock, Harold Caler, Walter Rostocil, Jack Hageman, Hubert Nuss, Wayne Foster, Raymond Deines, Martin Deines, La

Verne Walker, Larry Yost, Jack Grant, Charles Converse, Robert Munson, Ernest Potoroff, Edgar McCauley, Alvin Law, Larry Hull, Glen Ingram, Arnold Gackstatter, Basil Marhofer, Hampton Steele, William Cromwell, Randall Newhouse.

Sigma Tau Gamma



United We Stand

Mrs. Elizabeth Wickizer, House-mother; Bill Hockett, President; Clarence Haynes, Vice-president; Leland Mason, Secretary; Jack Miles, Treasurer; Earl Swafford, Sponsor. **ACTIVES:** Leland Mason, Jack Hilgers, Bob Tombaugh, Max Marshall, Irvin Franzen,

Omer Kuhn, Irvin Atkinson, Clarence Haynes, Barney Boss, Elton Watts, Bob Jordan, George Omer, Bob Keenan, James Gleason, Byron Blair, Jack Miles, Bill Hockett, Richard Sigle, Lester Cathcart, John Felible, Bob Froeshner, Kenneth Beaver, Paul Blondfield. **PLEDGES:** Bob Demuth, Bill Dod-

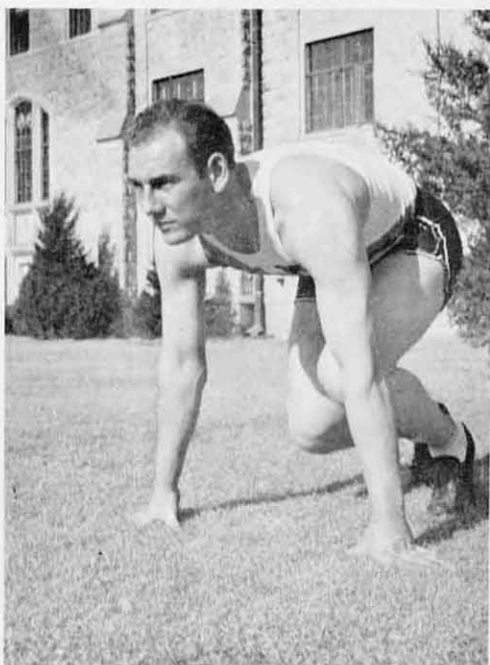
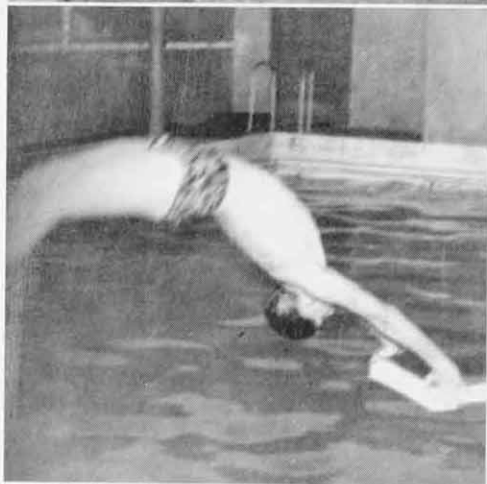
rill, Jerry Eddleman, Bob Rundle, Al Jett, Jim Clark, Al Ehly, Bud Seaman, Ralph Smith, Bruce Benson, Harold Hickman, Douglas Bourbach, Jack Owens, Al Hunsicker, Herb Kuhn, John Henderson, Warren Nebel, Marvin Durrant, Bob Sneck.

Tau Kappa Epsilon

SPRING SPORTS

In the spring a young man's fancy lightly turns to thoughts of love. In the spring a young man also thinks of outdoor fun with a tennis racket or baseball.

There were no inter-collegiate spring sports activities this year, but there were sports activities on the campus. The fraternities and independent teams competed in intra-mural sports consisting of volley ball, swimming, softball, horseshoe, and tennis tournaments.





HAPPY NEW YEAR



BELLE AND LUE



DRUM MAJORETTES

BIG CREEK FLOWS TRANQUILLY BETWEEN CUSTER HALL AND THE COLISEUM. THIS IS THE WATERFALLS SOUTH OF THE BRIDGE THAT LEADS TO CUSTER HALL.



THE TAVERN
by GEORGE M. COHAN

ARSENIC AND OLD LACE
by J. O. KESSERLING

GASLIGHT
by PATRICK HAMILTON

BATHROOM DOOR
by GERTRUDE E. JENNINGS

CLAUDIA
by R. D. FRANKEN

VINEGAR TREE
by PAUL OSBORN



★ THE PLAYS OF THE YEAR ★



The sixth year of the Little Theater was a varied and entertaining one for both the members and the audience for which they played. Mr. Orvis Grout produced a variety of plays from the taut, nervous *Gaslight* to the thoroughly and modern and unpredictable *Claudia*. Characters varied from the philosophical wanderer of the *Tavern* to the sweet ingenuous aunts of *Arsenic and Old Lace*.

Just as the plays themselves were varied so was the style of presentation. In *Claudia*, *Arsenic and Old Lace*, and in the one-act comedy *Bathroom Door* the production was in the Russian Penthouse manner.



The Tavern, an old-time melodrama, was the first play produced. Shortly after was Arsenic and Old Lace which combined horror, romance, comedy, and sweet innocence.

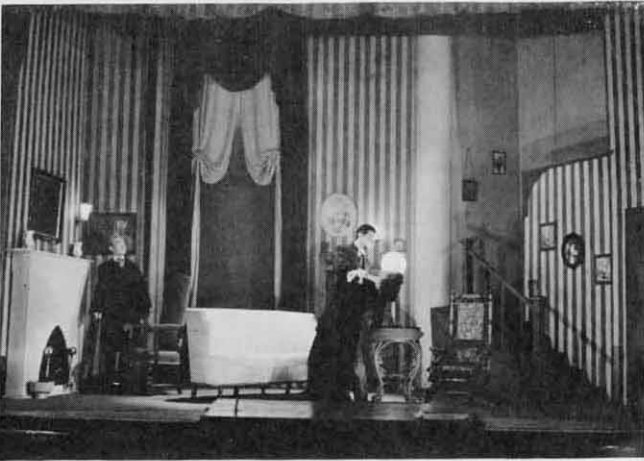
Bathroom Door, the only one-act play, was given three times during the New Year's Eve party.

Gaslight was played at Russell high school and twice on the campus. With a small cast it was a steady, deliberate play which had little or no relief of tempo in it.

Vinegar Tree, which was produced by Mr. Grout with the biggest share of the cast of townspeople, was played twice at Camp Phillips at Salina, at the Hays-Walker Airbase and for the air-crew students of the campus.

Claudia, a play of a light whimsical type, featured a feather-brained woman named Claudia.

Those who took part in these productions were: Bob Jackson, Dale Durfee, Elinor Brining, Richard Batchelor, James Reed, John Felible, Lois Timken, Esther Hueftle, Bud Seaman, Marie Howk, Peggy Nichols, Mary Carswell, Arthur Berg, Joe Mangano, Scotty Phillip, Bill Whitaker, Izella Phillip, Betty Radcliffe, Dean Curry, Mary Wooster, Leo Schraeder, Winnie Baker, Royal Johnson, Ed Strand.



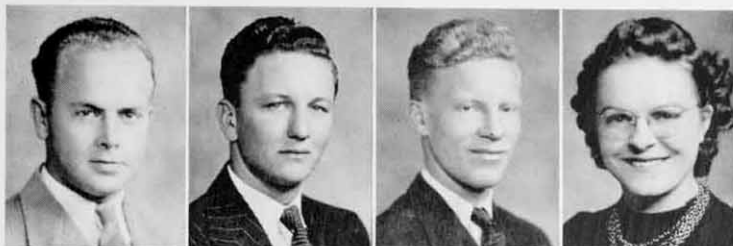


THE SENIORS

To the senior goes the crowning achievement of four years of hard work—his degree. The seniors who will receive their degrees this spring have worked hard at their studies, play and especially extra curricular activities. Mary Wooster is president of the senior class this

year. The class is leaving the school a fund, to be added to by next year's class, for the erection of a memorial to the former students who lose their lives in the service. Other officers of the class are: Mary Jeanne Bolan, Vice-president; Shirley Fricker, Secretary-treasurer.

IRVIN ATKINSON
Plains
ROGER ARENSDORF
Ensign
ROBERT BEERY
Selden
ELSIE BEESLEY
Gove



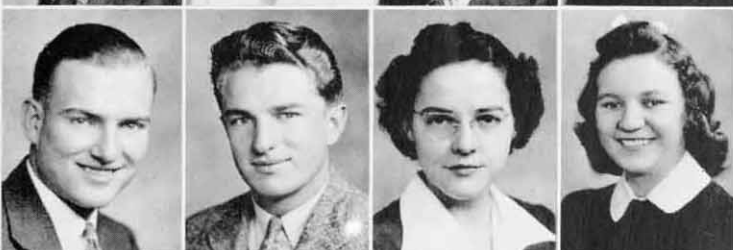
MARY BEESLEY
Gove
SR. JOHN BERCHMANS
Hays
WAYNE BIEHLER
Collyer
MARY JEANNE BOLAN
Plains



ELI BOUCHER
Zurich
WILBURMA BRIGHT
Toronto
ROBERT CALFEE
Logan
MARY CARSWELL
Hays



LESTER CATHCART
Danbury, Nebraska
HARRY CHRISTMAN
Ashland
MAXINE COOK
Trousdale
ANNE LAURIE DANIELS
Hays



VIVIAN EWY
Hanston
JOHN FELIBLE
Stockton
DOROTHY FELLERS
Hays
WAYNE FISHER
Ludell

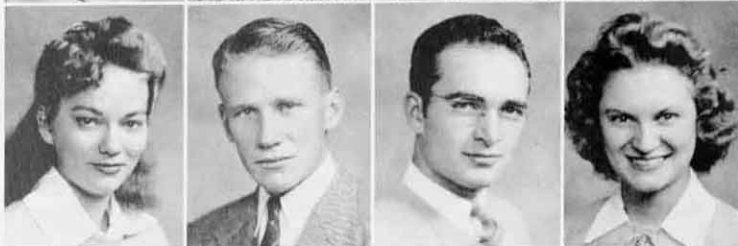


MILFORD FLINN
Randall
ELMA FRANZEN
Canton
IRVIN FRANZEN
Canton
SHIRLEY FRICKER
Esbo





RUTH GASCHÉ
Garden City
IMOGENE GICK
Hays
ALBERT GIEBLER
Hays
JAMES GLEASON
Kinsley



LOUISE GREEN
Dodge City
WARREN HAXTON
Chase
CLARENCE HAYNES
Colby
MILDRED HEITSCHMIDT
Bushlon



BILL HOCKETT
Plains
LORRAINE HICKEY
Hoisington
JAMES HOWER
Hays
HORACE JACOBINI
Hays



ARRIS JOHNSON
Oberlin
GENEVIEVE KEATING
Lincoln
CLINTON KELLER
Page City
AUDREY LAFF
Beloit



ROBERT LEATHERS
Bird City
BILL LUDÉS
Salina
NADINE MALLORY
Brewster
JOSEPH MANGANO
New York City



HAROLD MILLER
Oakley
JOHN MODEN
Wakarusa
MIRIAN MOORE
Tribune
BEN MOSIER
Hoxie

MORRIS PARSONS
Wakeeney
BETTIE POLLACK
Hays
VELMA PORTSCHY
Herndon
BOB POSTMA
Hays



ELIZABETH REEVES
Garden City
BLANCHE RENNER
Oakley
ELLEN LOUISE REFLOGLE
Hays
WALTER RIDENOUR
Kishiee



ERMA RIEDEL
Hays
NOEL RUNYON
Grinnell
LE ROY SHAW
Hoxie
RICHARD SIGLE
Covert



ESTHER SIM
Oakley
LOIS SIMONS
Stockton
JACK SLOAN
Mullinville
RALPH SMITH
Cherryvale



LYN STEWART
Pottis
DOLLIE THOMAS
Hays
ALETHA UNRUH
Pawnee Rock
VIOLET WHITE
Paradise



BERNARD WOLFORD
Clallin
MARTHA WOOSTER
Hays
MARY WOOSTER
Hays



GRADUATES of '43 — Who They Are —

- IRVIN ATKINSON . . . Plains
B.S. in Business Administration
 Parliamentary Law Club; Y.M.C.A.; Tau Kappa Epsilon.
- ROGER ARENSDORF . . . Ensign
B.S. in Education
 Engineers Club; Newman Club; Sigma Pi Sigma.
- WILMA BEARLEY . . . Hays
B.S. in Business Administration
 Panhandle A. & M. College, Goodwell, Oklahoma; Kansas State Teachers College, Emporia, Kansas; University of Iowa, Iowa City, Iowa.
- ROBERT BEERY . . . Selden
B.S. in Education
 A Cappella Choir; Leader; Y.M.C.A.; Phi Delta Chi.
- ELSIE BEESLEY . . . Gove
B.S. in Education
 W.A.A.; Y.W.C.A.; Sigma Sigma Sigma; Kappa Phi.
- MARY BEESLEY . . . Gove
B.S. in Education
 Kappa Phi; Y.W.C.A.; Sigma Sigma Sigma; Kappa Phi.
- SR. JOHN BERCHMANS . . . Hays
B.M.
- ARTHUR BERG . . . Palco
A.B. in English
 Kansas Wesleyan University, Salina, Kansas; Little Theatre; Y.M.C.A.; Choral Union.
- WAYNE BIEHLER . . . Collyer
B.S. in Science
 "K" Club; Y.M.C.A.; Phi Sigma Epsilon.
- MARY JEANNE BOLAN . . . Plains
B.S. in Education
 Kappa Phi; A Cappella Choir; Quill Club; Parliamentary Law Club; Band; Women's Leadership; Y.W.C.A.; president; Student Council; Who's Who Among Students in American Universities and Colleges.
- ELI BOUCHER . . . Zurich
A.B.
 Engineers Club, Newman Club, president; Parliamentary Law Club; Little Theatre; Sigma Pi Sigma; Phi Delta Chi.
- WILBURMA BRIGHT . . . Toronto
B.S. in Education
 Phillips University, Enid, Oklahoma; Duck Club; Tigerettes; W.A.A.; Theta Sigma Upsilon.
- ROBERT CALFEE . . . Logan
B.S.
 Sigma Pi Sigma, president; Engineers Club, president; A Cappella Choir; Y.M.C.A.; Choral Union; Who's Who Among Students in American Universities and Colleges; Tau Kappa Epsilon.
- MARY CARSWELL . . . Hays
A.B.
 A Cappella Choir; Quill Club; Little Theatre; Women's Leadership; Delta Sigma Epsilon; Theta Epsilon; Who's Who Among Students in American Universities and Colleges.
- LESTER CATHCART . . . Danbury, Nebr.
B.S. in Business Administration
 International Relations Club; Pi Gamma Mu; Parliamentary Law Club; Seventh Cavalry; Y.M.C.A.; Student Council; Tau Kappa Epsilon.
- HARRY CHRISTMAN . . . Ashland
A.B.
 University of Minnesota; University of Colorado; Engineers Club; International Relations Club; A Cappella Choir; Choral Union; Track; Pre-Medic Club; Phi Mu Alpha, president.
- GEORGE COOK . . . Concordia
A.B. in Chemistry
- MAXINE COOK . . . Trousdale
B.S. in Education
 Y.W.C.A.; Kappa Phi.
- ANNE LAURIE DANIELS . . . Hays
A.B. in English
 University of Colorado, Boulder, Colorado; A Cappella Choir; Leader, editor; Quill Club; Tigerettes; Orchestra; Little Theatre; Reveille, editor; Sigma Alpha Iota.
- VIVIAN EWY . . . Hanston
B.S. in Home Economics
 Home Economics Club; Kappa Phi; Y.W.C.A.; Kappa Phi.
- JOHN FELIBLE . . . Stockton
A.B.
 International Relations Club; A Cappella Choir; Parliamentary Law Club; Pi Kappa Delta, president; Quill Club; Seventh Cavalry; Y.M.C.A.; Little Theatre; Tau Kappa Epsilon.
- DOROTHY FELLERS . . . Hays
B.S. in Business Administration
 Duck Club; Second Generation Club; Band; Tigerettes; Orchestra; Orchestis; Theta Sigma Upsilon.
- WAYNE FISHER . . . Ludell
B.S. in Science
 Engineer's Club; Parliamentary Law Club; Y.M.C.A.; Phi Delta Chi.
- MILFORD FLINN . . . Randall
B.S. in Chemistry
 Engineers Club; Phi Delta Chi.
- ELMA FRANZEN . . . Canton
B.S. in Home Economics
 Home Economics Club; Y.W.C.A.
- IRVIN FRANZEN . . . Canton
A.B. in Economics
 Tau Kappa Epsilon.
- SHIRLEY FRICKER . . . Esbon
B.M. in Education
 A Cappella Choir; Band; Women's Leadership; Y.W.C.A.; Student Council; Orchestra; Kappa Phi; Who's Who Among Students in American Universities and Colleges; Sigma Alpha Iota.
- RUTH GASCHE . . . Garden City
B.S. in Education
 Garden City Jr. College; Orchestra; Quill Club; Y.W.C.A.
- AVIS BETH GAULT . . . Richmond
A.B. in English
 Ottawa University, Ottawa, Kansas; Delta Sigma Epsilon.
- ALBERT GIEBLER . . . Hays
B.M. in Education
 St. Joseph's Jr. College, Hays; A Cappella Choir; Newman Club; Band; Orchestra.
- IMOGENE GICK . . . Hays
B.S. in Education
 A Cappella Choir; Leader; Quill Club; Band; Reveille; Y.W.C.A.; Little Theatre; Kappa Phi; Theta Sigma Upsilon.
- JAMES R. GLEASON . . . Kinsley
B.S. in Business Administration
 Newman Club; Pi Gamma Mu; Tau Kappa Epsilon.
- LOUISE GREEN . . . Dodge City
B.S. in Education
 Dodge City Jr. College; Duck Club; Tigerettes; W.A.A.; Orchestis; Delta Sigma Epsilon, president.
- LOREN GROVER . . . Stockton
A.B. in Zoology
 Y.M.C.A.; Student Council; Scout Master Training; Who's Who Among Students in American Universities and Colleges.
- DALE HART . . . Hays
A.B. in Mathematics
 Little Theatre.
- JOHN HATCHER . . . Plains
B.S. in Education
 Y.M.C.A.; Phi Sigma Epsilon; "K" Club.
- WARREN HAXTON . . . Chase
B.S. in Education
 Seventh Cavalry; Basketball, co-captain; "K" Club, president; Phi Sigma Epsilon.
- MILDRED HEITSCHMIDT . . . Bushton
B.S. in Education
 A Cappella Choir; Band; Y.W.C.A.; Orchestra; Sigma Alpha Iota.
- LORRAINE HICKEY . . . Hoisington
B.S. in Business Administration
 Newman Club; Pi Gamma Mu; Sigma Sigma Sigma.
- BILL HOCKETT . . . Plains
B.S. in Business Administration
 International Relations; Pi Gamma Mu, president; Seventh Cavalry; Reveille, business manager; Y.M.C.A.; Student Council; Tau Kappa Epsilon, president.
- JAMES HOWER . . . Hays
B.M. in Education
 A Cappella Choir; Band; Orchestra; Little Theatre; Seventh Cavalry; Who's Who Among Students in American Universities and Colleges; Phi Mu Alpha, president.
- BETTY HUBERT . . . Hays
A.B. in English
 Leader; Little Theatre; Quill Club; International Relations Club.

Where They Live — What They Did!

- HORACE JACOBINI Hays
A.B.
 Band; Choral Union; Orchestra; International Relations Club; Who's Who Among Students in American Universities and Colleges; Phi Mu Alpha.
- ARRIS JOHNSON Oberlin
B.S. in Education
 Seventh Cavalry; Band, president; Y.M.C.A.; Orchestra, president; Phi Mu Alpha, president.
- GENEVIEVE KEATING Lincoln
B.S. in Business Administration
 Y.W.C.A.
- CLINTON KELLER Page City
B.S. in Education
 "K" Club; Student Council; Homecoming King; Phi Sigma Epsilon.
- AUDREY LAFF Beloit
B.S. in Business Administration
 International Relations Club; Leader; Parliamentary Law Club; Tigerettes; W.A.A.; president; Women's Leadership; Y.W.C.A.; Kappa Phi.
- ROBERT LEATHERS Bird City
A.B.
 Engineers Club; International Relations Club; Cheerleader; Aqua Club; Phi Delta Chi.
- BILL LUDES Salina
A.B.
 St. Joseph's Jr. College, Hays; "K" Club; Newman Club; Parliamentary Law Club; Basketball; Golf; Phi Sigma Epsilon.
- DORIS LYNCH Morland
B.S. in Education
 University of Hawaii, Honolulu, Hawaii; Choral Union; Glee Club.
- NADINE MALLORY Brewster
B.S. in Education
 Band; Tigerettes; Y.W.C.A.; Sigma Sigma Sigma.
- JOE MANGANO Bronx, New York
B.S. in Education
 Newman Club; Little Theatre; Phi Delta Chi.
- HAROLD MILLER Oakley
B.S.
 "K" Club; Seventh Cavalry; Football; Phi Sigma Epsilon.
- JOHN MODEN Wakeney
B.S. in Business Administration
 Leader, business manager; Little Theatre; Sigma Tau Gamma.
- MIRIAM MOORE Tribune
B.S. in Education
 A Cappella Choir; Quill Club; Second Generation Club; Band; Y.W.C.A.; Orchestra; Kappa Phi; Sigma Alpha Iota.
- BEN MOSIER Hoxie
A.B.
- MORRIS PARSONS Wakeney
A.B.
 Sigma Pi Sigma.
- BETTIE POLLACK Hays
B.S. in Education
 Duck Club; Home Economics Club; Second Generation Club; Tigerettes; W.A.A.; Women's Leadership; Y.W.C.A.; Sigma Sigma Sigma.
- VELMA PORTSCHY Herndon
B.M. in Education
 A Cappella Choir; Band; Women's Leadership; Y.W.C.A.; Orchestra; Sigma Alpha Iota, president; Girls' Quartet; Eastern Star Scholarship Award.
- BOB POSTMA Hays
A.B.
 International Relations; Seventh Cavalry, president; Band; Y.M.C.A., president; Student Council; Orchestra.
- BILL READ Hays
B.S.
 "K" Club; Football; Phi Sigma Epsilon; Who's Who Among Students in American Universities and Colleges.
- FRANCIS REED Hays
A.B.
 Choral Union; Glee Club; Kappa Pi; Reveille.
- ELIZABETH REEVES Garden City
B.S. in Home Economics
 Hutchinson Jr. College, Hutchinson, Kansas; Kansas State Teachers College, Emporia, Kansas; Garden City Jr. College, Garden City, Kansas.
- BLANCHE RENNER Oakley
B.S. in Business Administration
 Duck Club; Leader; Newman Club; W.A.A.; Theta Sigma Upsilon.
- ELLEN LOUISE REFLOGLE Hays
B.S. in Education
 Band; Kappa Phi.
- WALTER RIDENOUR Kismet
B.S. in Botany
 Kansas State College, Manhattan, Kansas; Y.M.C.A.; Phi Sigma Epsilon.
- ERMA RIEDEL Hays
B.S. in Art
 International Relations Club; Kappa Pi, president; Quill Club; Second Generation Club; Women's Leadership; Y.W.C.A.; Orchestra; Kappa Phi, president; Who's Who Among Students in American Universities and Colleges.
- NOEL RUNYON Grinnel
B.S.
 Engineers Club; International Relations Club; Second Generation Club.
- EUGENE SCHOOLER Osborne
B.S. in Business Administration
 A Cappella Choir; Y.M.C.A.; Glee Club; International Relations Club; Tau Kappa Epsilon; Who's Who Among Students in American Universities and Colleges.
- LEO SCHRAEDER Timken
B.S.
 Glee Club; A Cappella Choir; Choral Union; Y.M.C.A.; Who's Who Among Students in American Universities and Colleges; Phi Mu Alpha.
- LE ROY SHAW Hoxie
B.S. in Business Administration
 Y.M.C.A.
- RICHARD SIGLE Covert
B.S. in Education
 Engineers Club; International Relations Club; Parliamentary Law Club; Y.M.C.A.; Tau Kappa Epsilon.
- ESTHER SIM Oakley
B.S.
 Home Economics Club; Y.W.C.A.; Secretary of Kansas Student Home Economics Clubs; Theta Sigma Upsilon, president; Who's Who Among Students in American Universities and Colleges; Women's Leadership.
- LOIS SIMONS Stockton
B.S. in Education
 Y.W.C.A.; Sigma Sigma Sigma.
- JACK SLOAN Mullinville
B.S. in Education
 International Relations Club; "K" Club; Leader; Y.M.C.A.; Track; Varsity manager; Intra-mural manager.
- RALPH JOE SMITH Cherryvale
A.B.
 International Relations Club; A Cappella Choir; Parliamentary Law Club; Y.M.C.A., president; Who's Who Among Students in American Universities and Colleges; Tau Kappa Epsilon.
- LYN STEWART Portis
B.S. in Business Administration
 Parliamentary Law Club; Phi Sigma Epsilon.
- DOLLIE B. THOMAS Hays
B.S. in Business Administration
 Georgia State College for Women, Milledgeville, Georgia; Y.W.C.A.
- ALETHA UNRUH Pawnee Rock
B.M. in Education
 A Cappella Choir; Band; Y.W.C.A.; Orchestra; Sigma Alpha Iota.
- THELMA GRAF-WHITE Long Island
B.S. in Education
 Kansas Wesleyan University, Salina; Y.W.C.A.
- BERNARD WOLFORD Clafin
B.S. in Education
 International Relations Club; Y.M.C.A.; Phi Sigma Epsilon.
- MARtha WOOSTER Hays
A.B. in Psychology
 University of Colorado, Boulder, Colorado; A Cappella Choir; Leader; Women's Leadership; Orchestra; Who's Who Among Students in American Universities and Colleges; Sigma Alpha Iota.
- MARY WOOSTER Hays
A.B. in Political Science
 University of Colorado, Boulder, Colorado; International Relations Club; A Cappella Choir; Pi Gamma Mu; Reveille, editor; Women's Leadership, president; Student Council; Orchestra; Who's Who Among Students in American Universities and Colleges; Senior class president; Sigma Alpha Iota.
- AWYN PILCHER-ZELLER Luray
B.S. in Education
 W.A.A.; Band; Duck Club; Orchestis.



LOREN GROVER
HORACE JACOBINI

MARY CARSWELL

ERMA RIEDEL

MARY WOOSTER

ROBERT CALFEE

ACHIEVEMENT

Each year the Reveille recognizes the six outstanding seniors by printing their pictures on the achievement page. The six seniors are impartially chosen by the faculty on a basis of scholarship, honors, and leadership in extra-

curricular activities. Loren Grover of Stockton and Mary Wooster of Hays were chosen as first place winners of the achievement award this year. Horace Jacobini, Mary Carswell, Erma Riedel, and Robert Calfee were the other four chosen.

WHO'S WHO

Our Students in American Universities and Colleges

The appropriate climax of a student's career is membership in Who's Who Among Students in American Universities and Colleges. It is the summing up of all the other honors, scholastic or social that he has attained. Membership in Who's Who is the only national means of recognition for honor students devoid of initiation fees and dues. Students are chosen impartially from colleges throughout the nation. The requisites for membership are character, scholarship, leadership in extra-curricular activities, and potentiality for future usefulness to business and society. Juniors, seniors, and students in advanced work are eligible. The book, "Who's Who Among Students in American Universities and Colleges" is published each year, and contains the biographies of the members. The first book was printed for the school year 1934-35. The purpose of the project is to serve as an outstanding honor in which a deserving student, after displaying merit in college and accomplishing his goals, would be given recognition without having to pay some fee, and to establish a reference volume of authoritative information on the great body of America's leading college students. The students listed in Who's Who represent the best that our colleges can produce. This year the following Fort Hays students were elected to Who's Who: Mary Jeanne Bolan, Eli Boucher, Robert Calfee, Mary Carswell, Shirley Fricker, Loren Grover, James Hower, Horace Jacobini, Velma Portschy, William Read, Frances Reed, Erma Riedel, Eugene Schooler, Leo Schraeder, Esther Sim, Ralph Smith, Martha Wooster, and Mary Wooster.





HOCKETT AND THOLEN WORRY IT OUT

THE REVEILLE TELLS THE STORY

DEAR STUDENTS:

You've come to the last part of your Reveille, and we hope you've enjoyed thumbing through it. It has been a lot of hard work for the staff, but it has been great fun too. We have tried to picture the events of the year just as you remember them. Our hope is that we have not slighted anyone or anything. If we have, we're sorry.

THE REVEILLE STAFF

P.S. We want to thank all who have cooperated with us this year, especially those students, not staff members, who helped us in their spare time. The advice of Mr. Paul T. Scott and Mr. Wallerstedt was indispensable, and we appreciate it.



PICTURES TO THE EDITORS

Sirs:

There's never a dull moment in the life of a photographer. While going through my files I came across these pictures of my fellow college sufferers. I'm submitting

them to you hoping your readers will receive as much enjoyment from them as I have.

BOB TOMBAUGH
Burdett, Kansas

(continued on p. 90)



HAYS MUSIC CO.



Serves
Western Kansas



Everything
in
Music



PIANOS
RECORDS



POPULAR SHEET
MUSIC



MUSIC
BOOKS

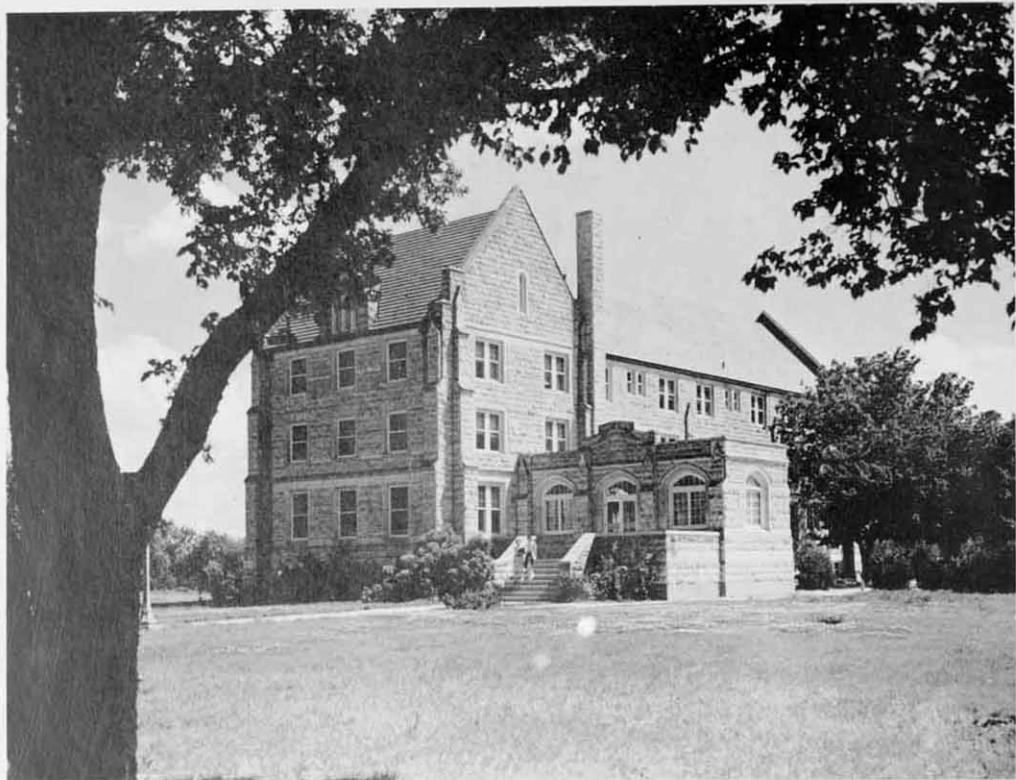


INSTRUMENT
REPAIR



Phone 1215

HAYS, KANSAS



CUSTER HALL COMFORTABLY SITUATED BEYOND THE BANKS OF BIG CREEK

WHERE IT ALL HAPPENED

Fort Hays Kansas State is a name that will not be forgotten by the students and faculty who enjoyed many happy experiences while at the college. This year was a year of hard work and study and the war made everyone a bit more serious, but the job was well done and worth it. In the fall, a new group of students will be coming back to the campus, where it all happened.



PICTURES TO THE EDITORS

(continued)

Sirs:

Few students realize what a large and interesting museum we have on our campus. Mr. George Sternberg, paleontologist, has a number of rare specimens which are displayed on the main floor of the library. The accompanying picture of Mr. Sternberg was taken in the museum.

ANNABELLE DAVIS

Hays, Kansas

(continued on p. 93)



FORT HAYS STATE COLLEGE

Always Ready to Serve—

In Peace

As Well As

WAR

★

All Out for

VICTORY!

★

*EDUCATION—The Preventive
Of World Conflict*

GEO. PHILIP & SON

Phone 53

Home Phone 302

Dealers in

HARDWARE
COAL AND GAS HEATERS AND RANGES
PAINT, OIL AND GLASS
CUTLERY

Eighth and Main

Hays, Kansas

ELITE CAFE

*Nothing Old-Fashioned but the
Hospitality*



We Appreciate Your Patronage

West Tenth

MRS. JOHN SAHLI, Prop.

Hays, Kansas

THE
HARKNESS
PHARMACY

"Conveniently
Located"



PRESCRIPTIONS
MAGAZINES
SODAS
DRUGS



PHONE
76

PICTURES TO
THE EDITORS

(continued)



Sirs:

Two of the faculty members were unable to be present when I took the faculty group pictures. I am sure that most of the students know these two men and would be disappointed if their pictures did not appear in the Reveille. I am enclosing a picture of them. They are Dr. Homer B. Reed and Dr. George Kelly, both of the psychology department.

LARRY YOST

LaCrosse, Kansas

(continued on p. 95)



HAYS
CREAMERY
AND
ICE CO.



ICE CREAM
BUTTER



NOVELTIES
ICE



Phone 484

HAYS,
KANSAS

The **LAMER HOTELS** *in Kansas*



REMEMBER:

If You Don't Get the Accommodations You
Want, Some Member of Our Armed Forces
May Have Them.

H. B. LAMER, *Vice-President*

A. W. STEDHAM, *President*

Fort Hays Pharmacy

Prescription Specialists

Drugs, Cigarettes
Fountain Service

PHONE 858

Stationery
Cosmetics

LOTS OF LUCK *from*

Elda, Jack, Peaches, Tommy, Connie, Hazel, Chick, Harry, Wilma

WINTER'S
Hardware and Gifts

Phone 16

810 Main

Hays

CLEANING AND PRESSING

Reasonable Rates

KESSLER'S

126 West 9th
HAYS, KANSAS

Quality
Reigns
Supreme

•

MORRISON'S
JEWELRY

•

HAMILTON
and
ELGIN
WATCHES

•

DIAMONDS
and
WEDDING
RINGS

•

Phone 152
107 W. 10th

PICTURES TO THE EDITORS

(continued)



Dear Sir:

I am inclosing a picture of one of the most popular couples on the Fort Hays campus. The "glamour pants" is none other than Leland Mason, the pride and joy of the Tekes. The charming young lady is his gal from Kalamazoo. Miss Boss made the long trip from Kalamazoo just to be here with Leland for the Teke party, and I feel that she deserves a place in your publication. I would certainly appreciate it if you would print the inclosed picture. I know your readers will enjoy it.

HERB KUHN

Hays, Kansas

Complete Home Furnishings

★

REPAIR
SERVICE

★

No
Service Too
Small

★

HOME FURNITURE COMPANY

★

Solid Walnut
Bedroom
and
Dining Room
Suites

★

Geo. J. Gottshalk
PHONE 236
802 MAIN

IDEALS ARE PRACTICAL THINGS

Victory, complete and final, is the objective of every activity that now engages the attention of Government, of Industry, of Labor, and of Finance.

In war, as in peace, those who carry on in public service must hold fast to ideals.

Entrust your business to an institution that has served well through every major crisis for fifty-five years.

THE FIRST NATIONAL BANK

ORGANIZED 1888

HAYS, KANSAS



Resources Over \$2,000,000.00

Oldest Bank in Ellis County

*Member of
Federal Deposit Insurance Corporation*

*Victory Will Depend
On Seeing Well*

DR. W. F. CZESKLEBA



714 Main Phone 167

A.B.C. DRUG CO.

"Where Collegians Congregate"

REXALL STORE



PHONE 80



MANN'S IGA STORE

We Strive to Please

FREE DELIVERY

112 W. 11th

Phone 1115

"Say It With Flowers"

BAXTER'S FLOWER SHOP

A Corsage for the Formal

Phone 130

705 Main St.



DUCKWALL'S

The Store of Quality, Service, and Price

FOUNTAIN AND LUNCHEONETTE

CANDIES, ART AND
SCHOOL SUPPLIES

SOFT
DRINKS

“
Bobs
”

PROMPT
SERVICE

FOUNTAIN
and
BOTTLE BEVERAGES
SANDWICHES

Phone 263

327 East 8th

KREAM KRUST BREAD

For SANDWICHES—TOAST

A Large Display, Fresh Every Day

CAKES, COOKIES, ROLLS

LARZALERE BAKERY

PHONE 640

HAYS, KANSAS

WIESNER'S

CLOTHING

DRY GOODS

GROCERIES

MEATS

LADIES' READY-TO-WEAR

"The Place Where You Feel at Home"

BASEMENT DEPARTMENT

HAYS

KANSAS

Schlegel Shoe Shop

*Don't Let Your Shoes Have That
Unightly Look*

Bring or Send Them to Us

113 W. 10th

Hays, Kansas

Hays Building and Loan Association

SAVE and INVEST

Hays, Kansas

Phone 38

MARKWELL'S

College Books
Bought and Sold

Stationery

Note Books

Fountain Pens

Athletic Supplies

Art Supplies

School Supplies

Public School Supplies

Office Supplies

Loose Leaf Ledgers

Loose Leaf Ring Books

Filing Cabinets

Leather Goods

MARKWELL BOOK STORES

1010 Main

509 West 7th

Schwaller Lumber Co.

Remodel

Repair

Build

Quality Materials

Phone 92

STAR

THEATRE

HAYS

KANSAS

Best in Entertainment
At
All
Times!

Saturday Matinee 2:15

Sunday Matinee 1:30-3:30

Evening Show Starts 7:15

Prices Right

133 W. 10th

Phone 890

Style...



*If You Really Want
the New Things, You
Will Not Regret a
Visit to*

HAVENER'S

Men's and Boys'

Clothing

THE
COLLEGE
GROCERY



Only the
BEST
Is Our Motto



GROCERIES
MEATS
FRUITS
VEGETABLES



A
Satisfied Customer
Is a
Steady Customer



MR. AND MRS.
W. D. WALBURN,
Props.
507 West 7th
PHONE 404

THE
FARMERS
STATE
BANK



Member of the
Federal Deposit Insurance
Corporation



Each Deposit Account
Insured up to \$5,000
Under Federal Deposit
Insurance Plan



Capital and Surplus
\$125,000.00



THANK
YOU

The *Reveille* staff wishes to thank the business men who helped to make possible the publication of this annual.

Through the cooperative spirit they have shown, we, as students, should be loyal to them.



YOUR HOME

Lower Upkeep ← For → Longer Life

USE

Curtis Silentite Frames and Windows
Celotex Vaporseal and Board Insulation
Red Top Perforated Rock Lath

Curtis Millwork
Balsam Wool Insulation
Red Top Plaster

PRATT & LAMBERT PAINTS AND VARNISHES

Quality Lumber and Coal — Shingles — Asphalt Roofing
Cement — Brick

THE TREAT-SHAFFER LUMBER COMPANY

H. HAVEMANN, Manager

Hays, Kansas

Phone 74

208 W. 9th St.



Central Kansas Power Company

McA

*As Long as You Live
You Will Use Printing*



Printing and printed matter will be of importance to you throughout your life whether or not you ever engage in a business that requires of you an intimate knowledge of printing processes and production.

And you will find that your responsiveness to printed messages varies directly with the quality and style of the printing.

It is to gain this favorable but unconscious reader response that we have gathered a staff of workmen who have skill and experience together with the desire to excel.

The

McCORMICK-ARMSTRONG

PRINTING • OFFSET LITHOGRAPHY
CREATIVE SERVICE • PHOTOGRAPHY

Company

1501 EAST DOUGLAS AVE. • WICHITA, KANSAS

The Distinguishing Mark



of Excellent Printing

***THE MID-CONTINENT
ENGRAVING COMPANY***

ARTISTS

PHOTOGRAPHERS

PHOTO ENGRAVERS

. . . . Midco

**Dedicated to serving the
public in the creation of
illustrations and printing
plates that will produce
the maximum in ultimate
results.**

Phone 3-8254 Wichita 120 S. St Francis



